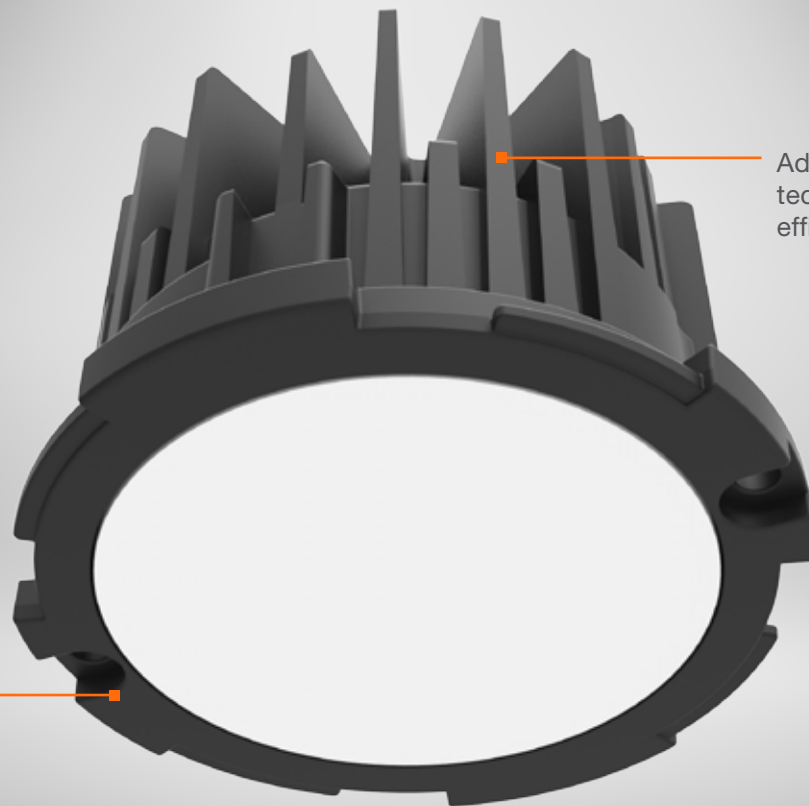


DCD1 LED



Adaptive Cooling™ technology for highly efficient heat dissipation

Seamlessly connects with 4", 5", 6" and 8" DMF new construction and remodel frame-in kits



Recessed LED Downlight

Designed for residential or commercial applications, the DCD1 LED delivers up to 2000 lumens of pleasing, low glare lighting. Powered by a 90+ CRI, color accurate LED – DCD1 produces lighting with true color representation while maintaining excellent fixture to fixture color consistency. DCD1 is the first LED module to feature Adaptive Cooling™, an innovative heat management technology that enables DCD1 to maintain its small form factor and high performance.

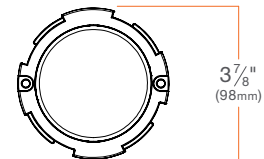
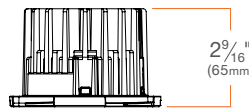
Learn more at dmflighting.com/dcd1

Product Specs

Application	5", 6" General New Construction; 5", 6" General Remodel; 4", 6", 8" Commercial New Construction; 6", 8" Commercial Remodel
Lumen Output (Power)	1000 lm (13.6W), 1500 lm (19.5W), 2000 lm (29.0W)
Color Quality	90+ CRI, 2-step SDCM
CCT Options	2700K, 3000K, 3500K, 4000K
Lifetime (L70)	50,000 hrs
Input Voltage	120/277V
Dimming	TRIAC/ELV down to 5% and 0-10V down to 10% standard, optional Lutron Hi-lume 1% dimming available
Emergency Lighting	Optional Emergency Battery Backup Units for emergency lighting up to 120 minutes
Trim Shape	Round
Trim Style	Smooth, Baffle ¹ , Wall Wash ¹ , Deep ¹
Trim Finish	White, Black ¹ , Silver Reflector w/ White Flange ¹ , Low Iridescent Reflector w/ White Flange, Custom
Listings	cULus Listed, ENERGY STAR qualified, Title 24 compliant, CEC listed, IC rated ¹ , ASTM E283 certified Air Tight with applicable housing, UL Listed for Wet Location
Warranty	5 years

¹ Available when used with DMF Lighting's General New Construction and Remodel Frame-in Kit options

DCD1M
LED Module



Product Selection Guide²

LIGHT ENGINE

PRODUCT CODE	LUMENS (WATTS)	CRI	CCT	CONSTRUCTION
DCD1M Module	10 1000 lm (13.6W)	9 90+ CRI	27 2700K	A Alternate Construction
	15 1500 lm (19.5W)		35 3500K	
	20 2000 lm (29.0W)		30 3000K 40 4000K	

² For complete ordering information, including frame-in kit and trim, see spec sheet



MDCD1SSPROD V-04.01.16

