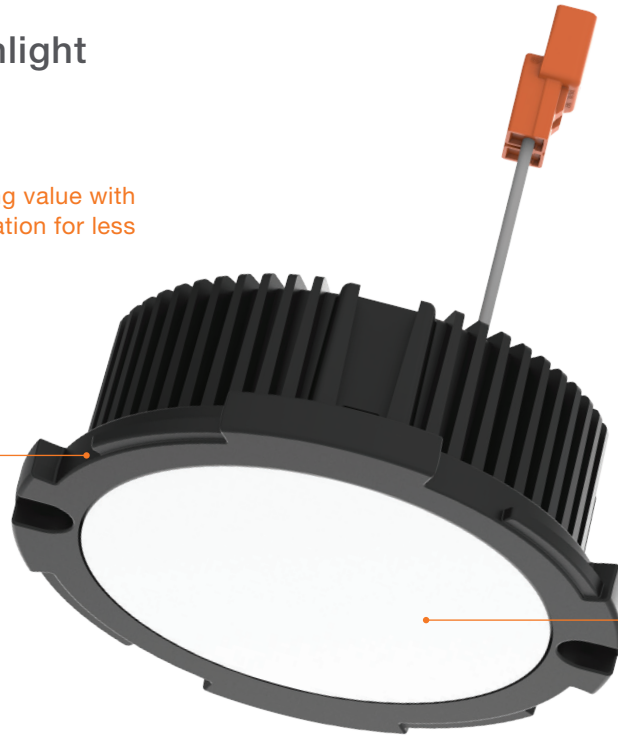


DRD2

Recessed LED Downlight

Industry-leading value with top-tier illumination for less

Compact, go anywhere design for a wide range of applications



93+ CRI rated LED produces 1000 lumens of exceptional light

Twist & Lock feature allows for easy, tool-free installations

Specs at a Glance

Application	New Construction, Remodel, Retrofit
Housing	OneFrame; SurfaceFrame; Classic Frames 4", 5", 6", 8"; Surface Mount; Junction Box
Lumen Output (Power)	750 lm (10.8W), 1000 lm (12.8W)
Color Quality	93+ CRI, 2-step SDCM
CCT Options	2700K, 3000K, 3500K, 4000K
Lifetime (L70)	50,000 hrs
Input Voltage	120/277V
Dimming	Down to less than 5% for TRIAC/ELV at 120V, 1% for 0-10V or Lutron® Hi-lume® 1% at 120/277V
Emergency Lighting	Optional Emergency LED Driver for lighting up to 90 minutes in event of power failure
Trim Shape	Round, Square, Deep
Trim Style	Smooth, Baffle, Hyperbolic, Pinhole, Beveled Pinhole, Wall Wash, EM
Trim Finish	White, Black, Silver (silver reflector, white flange), Alzak (low iridescent reflector, white flange), Custom
Listings	cULus Listed, ENERGY STAR® qualified, California Title 24 2016 JA8 compliant, UL Listed for Wet Location, DRDHNJD metallic outlet box certified UL514A up to 2 hours fire rating, STC/IIC Sound Rated, IC rated, ASTM E283 certified Air Tight
Warranty	5 years

Product Selection Example

See spec sheets for complete ordering information and options

FRAME-IN KIT (Product Code Example: DRDH + N + JD = DRDHNJD)

PRODUCT CODE		APPLICATION		APERTURE		DRIVER		OPTION	
<input type="text"/>		<input type="text"/>		<input type="text"/>		<input type="text"/>		<input type="text"/>	
DRDH	Housing	N	New Construction	JD	OneFrame - Deep Junction Box	[Blank]	Integrated TRIAC/ELV	[Blank]	None
						7O	0-10V, 750 lm	EM	EM Driver, Integrated Test Switch
						10O	0-10V, 1000 lm	EMS	EM Driver, Remote Test Switch
						7C	Lutron LDE1, 750 lm		
						10C	Lutron LDE1, 1000 lm		
						7W	Lutron L3DA3W, 750 lm		
						10W	Lutron L3DA3W, 1000 lm		

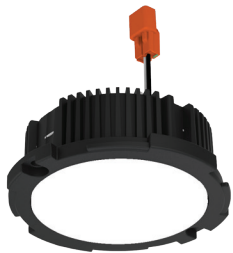
LIGHT ENGINE (Product Code Example: DRD2M + 7 + 9 + 27 = DRD2M7927)

PRODUCT CODE		LUMENS (WATTS)		CRI		CCT		DRIVER	
<input type="text"/>		<input type="text"/>		<input type="text"/>		<input type="text"/>		<input type="text"/>	
DRD2M	Module	7	750 lm (10.8W)	9	93+ CRI	27	2700K	[Blank]	Integrated TRIAC/ELV
		10	1000 lm (12.8W)			30	3000K	A	Alternate Dimming
						35	3500K		
						40	4000K		

TRIM (Product Code Example: DRD2T + R + JD + S + WH = DRD2TRJDSWH)

PRODUCT CODE		SHAPE		APERTURE		STYLE		FINISH		OPTION	
<input type="text"/>		<input type="text"/>		<input type="text"/>		<input type="text"/>		<input type="text"/>		<input type="text"/>	
DRD2T	Trim	R	Round	JD	Deep Junction Box	S	Smooth	WH	White	[Blank]	None
		S	Square			H	Hyperbolic	BK	Black	FL	Flangeless
						P	Pinhole	SW	Silver Reflector w/ White Flange	EM	Test Switch
						B	Beveled Pinhole	CC	Custom Color	DCC	Decorative: Closed, Clear
						W	Wall Wash			DCF	Decorative: Closed, Frosted
										DCCF	Decorative: Closed, Clear Out, Frosted In
										DOF	Decorative: Open, Frosted

Dimensions



DRD2
LED Module

