



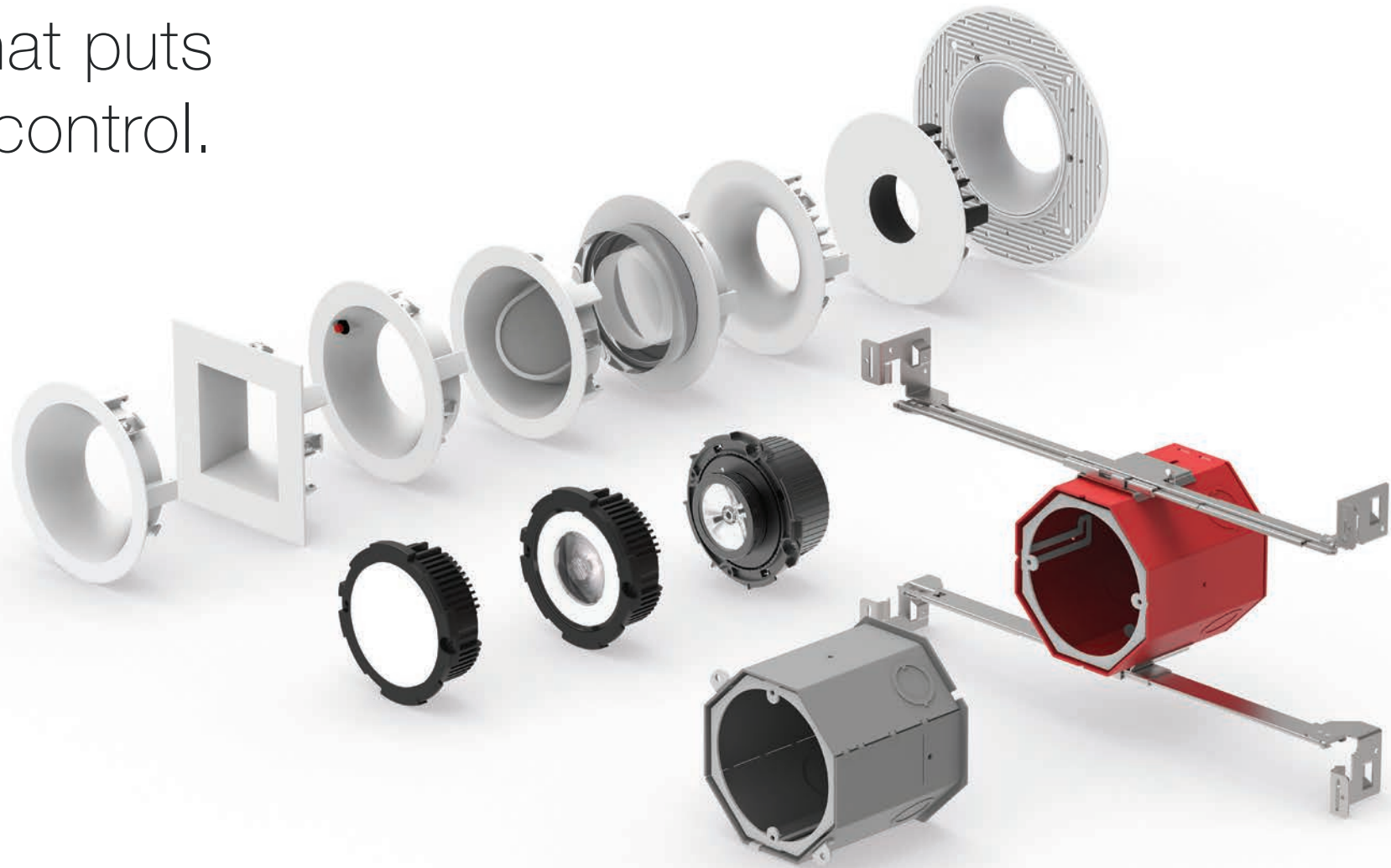
**Brilliance,
engineered.**





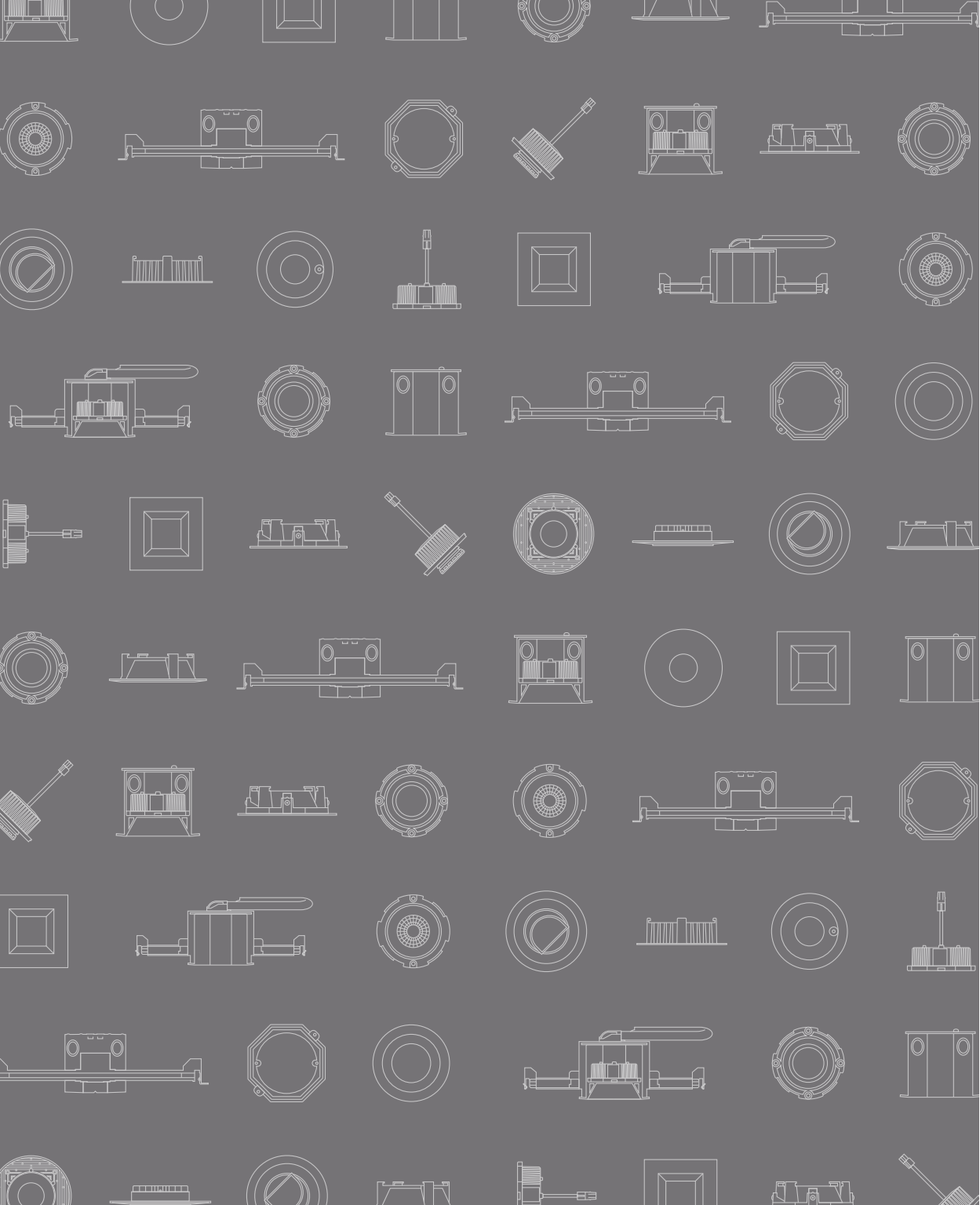
Rich, layered
light that adds
sophistication to
any space.

A modular
system that puts
you in control.





Ingenious
design that's
built to last.



This is DMF Lighting.

Our Story	11
The OneFrame System	25
LED Modules	35
OneFrame Trims	53
Surface Mounts	59
Commercial LED Modules	67
LED Cylinders	73
Project Gallery	79
Three Decades of Quality	85
Contact	98



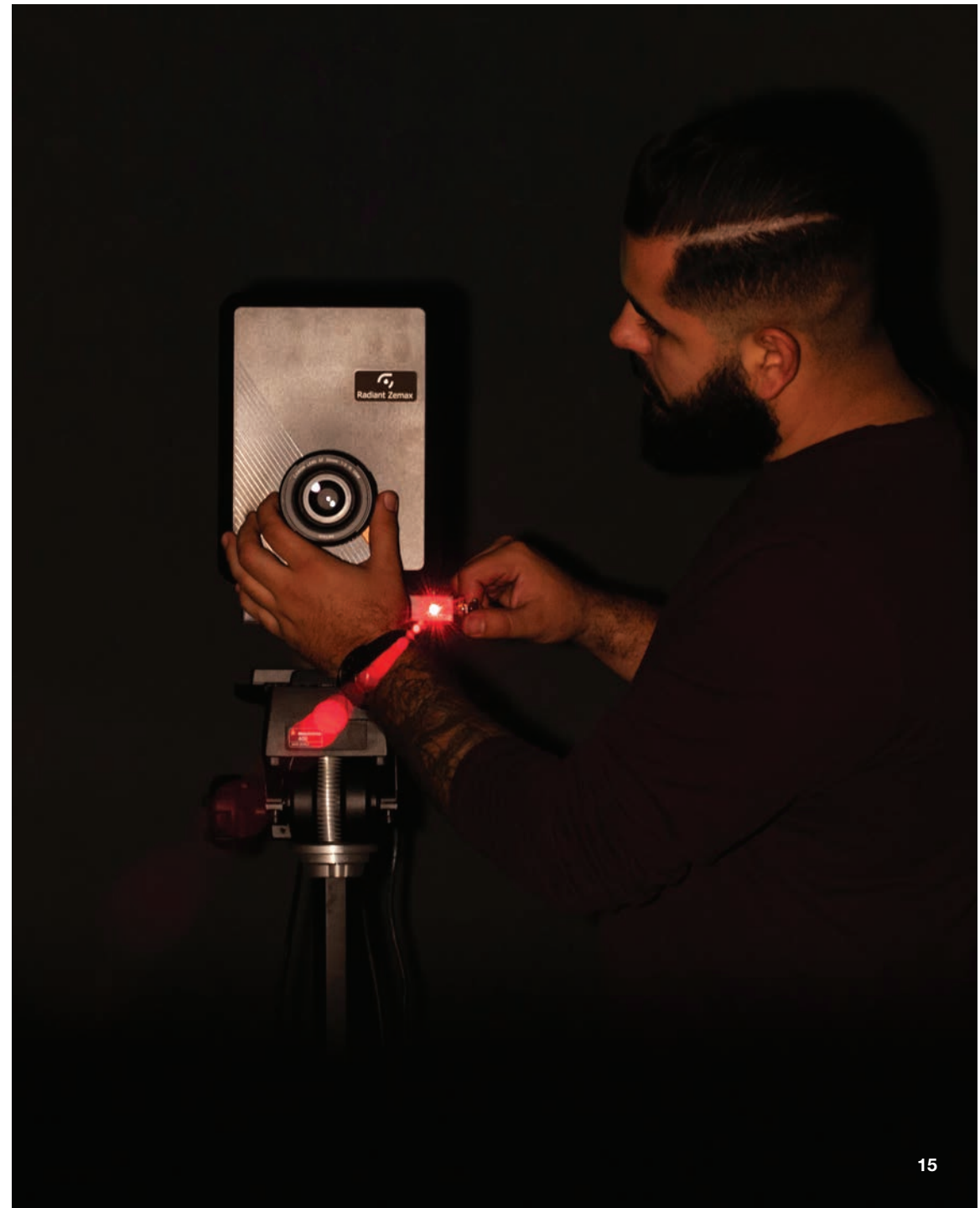
Our story is a quintessentially American one. It began decades ago, when an immigrant arrived in California without anything to his name. However, he was well educated, and his drive was unstoppable.

That man was Mark Danesh, an electrical engineer who specialized in lighting. Initially he had to start over in this country, working as a janitor, then as a contractor, but he remained fascinated by one thing: light.

Thirty years ago, Mark and his wife Faye founded DMF in their living room. He was focused on designing products, while she developed sales and customer service. They were both passionate about creating a better downlighting company, and their small home soon became DMF's first warehouse and lab.

Their ingenuity and drive became our company's DNA, and eventually turned DMF into a lighting industry leader.

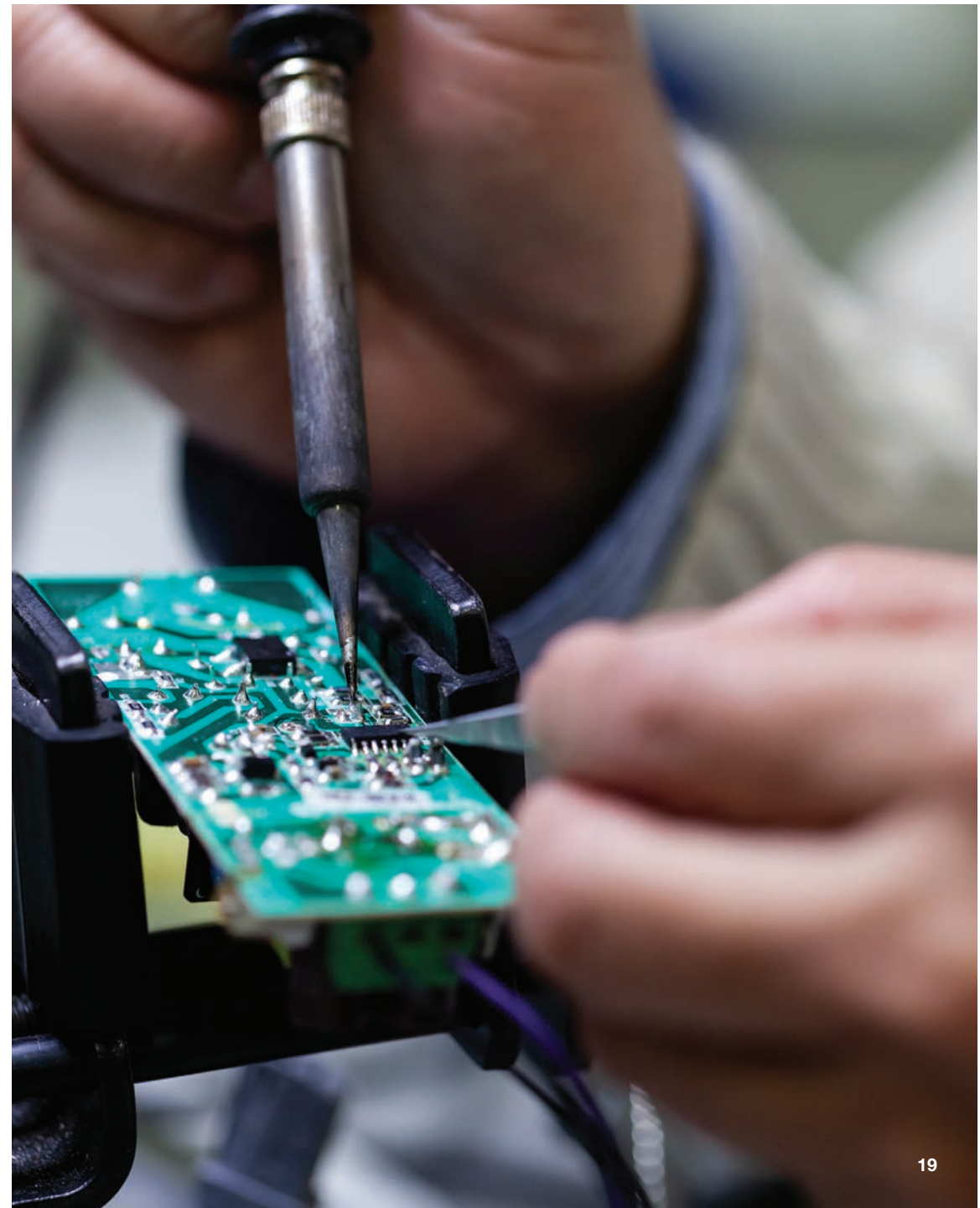
Today, our in-house R&D lab is filled with brilliant engineers always at work improving our products and inventing new ones.





They understand that light is more than illumination, it's what makes a space beautiful, useful, and ultimately, livable.

Our engineers create products that deliver exceptional performance and aesthetics, while saving you time and money, year after year.





Our founder's ethos
animates every part of
our company, from our
tireless customer service
to our fast, intelligent
distribution.

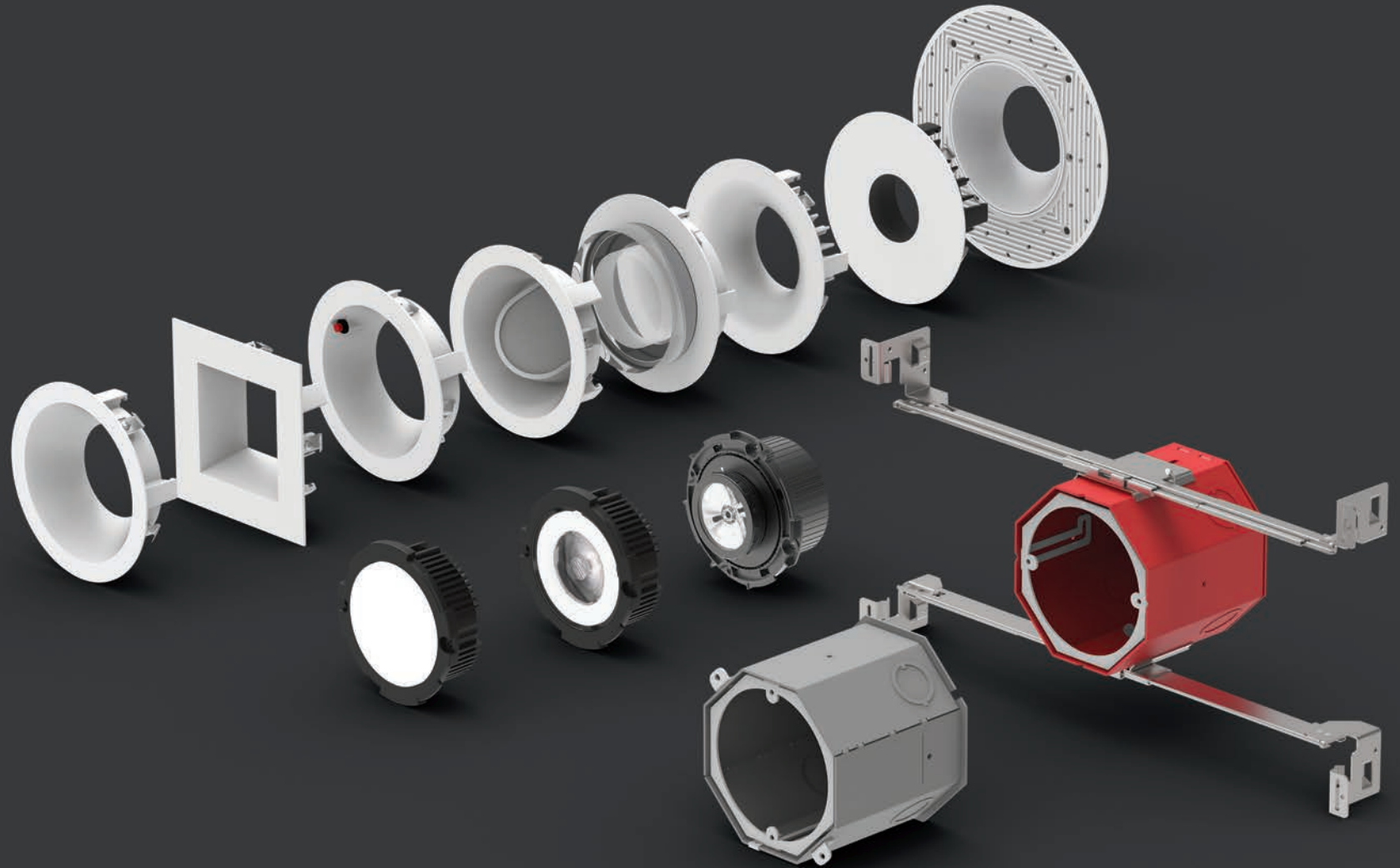
If you want lighting that's not just built better, but built smarter, DMF is the lighting partner for you.

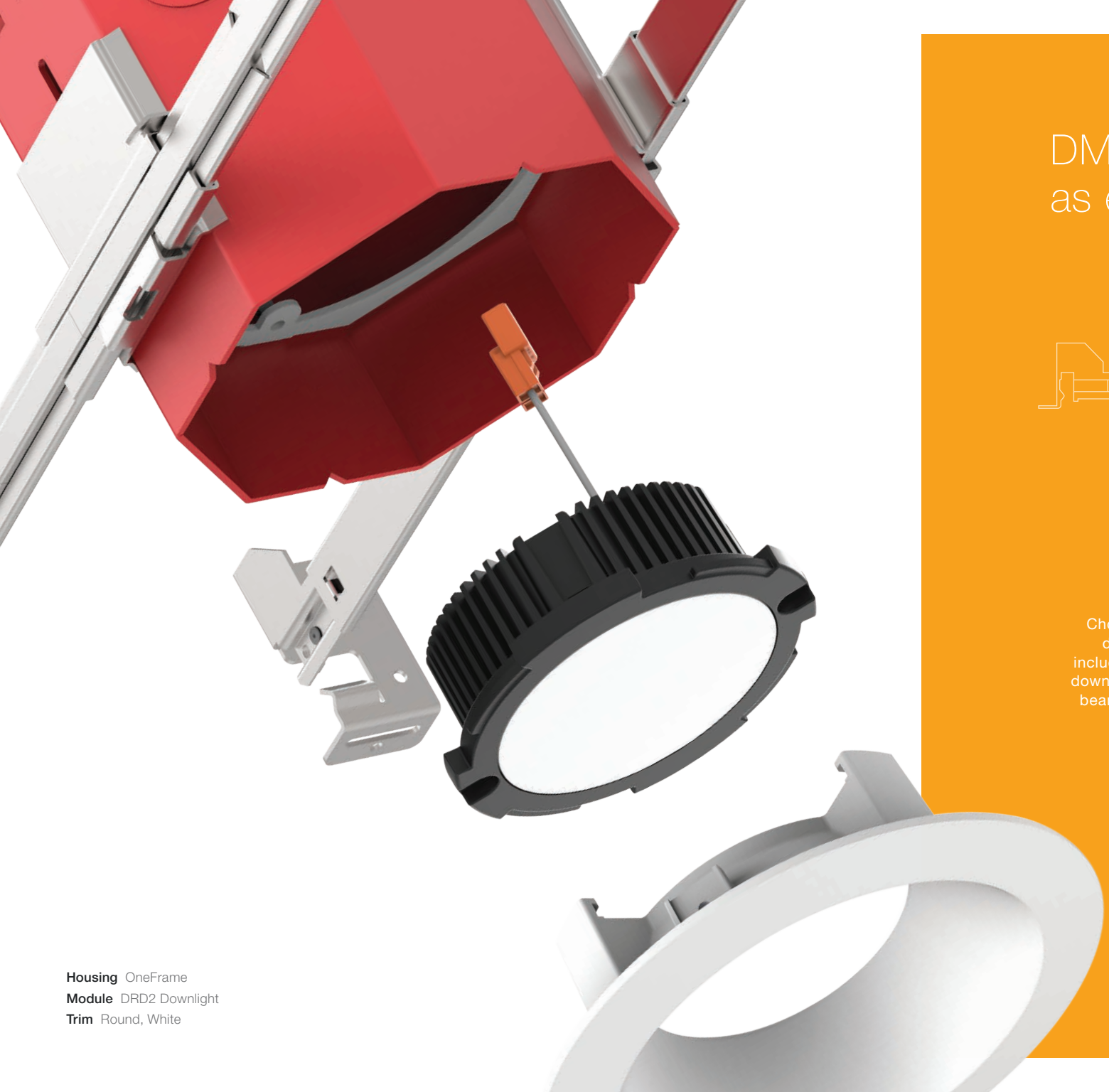
The logo for DMF, consisting of the lowercase letters 'dmf' in a bold, sans-serif font, is centered within a white square. The square is set against a dark gray background.

dmf

A modular system that puts you in control

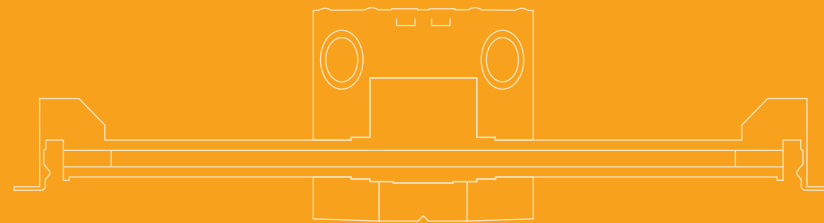
The OneFrame™ System represents the culmination of decades of engineering experience. We've made every element of this system to work seamlessly with the others. Each part is rigorously tested to ensure it's built to last and performs up to our high standards. Most importantly, the OneFrame System creates a better experience for specifiers, building residents, and everyone in between.





Housing OneFrame
Module DRD2 Downlight
Trim Round, White

DMF makes layered light
as easy as...

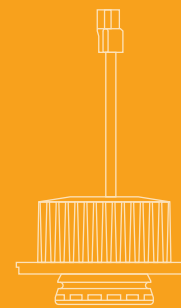


1

Start with the compact and versatile OneFrame housing, which also comes in concrete-tight and emergency versions.

2

Choose from three distinct modules including a standard downlight, controlled beam, or adjustable options.



3

Finish your fixture with a wide range of customizable trims that complement your project's aesthetic.



Designed for a lifetime of savings

Specification

- Modular system simplifies specification and reduces waste at the jobsite
- OneFrame supports general downlight, spotlight, or directional light modules
- Meets stringent wet location, fire, and efficiency requirements

Installation

- Elements designed to work together for fast, largely tool-free process
- Twist & Lock features makes installation almost as easy as screwing in a bulb
- Floating module height ensures perfect alignment with the ceiling

Maintenance

- Integrated drivers mean you can service the light without above-ceiling access
- Easy-to-swap elements let you adapt your design without added expense
- Modularity ensures there are fewer SKUs to manage



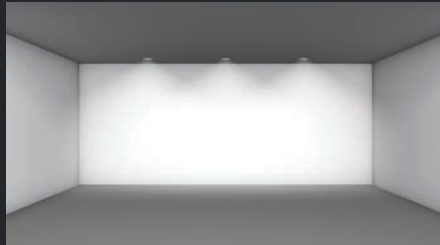
Housing OneFrame
Module DRD4 Adjustable
Trim Pinhole

Game-changing versatility

The OneFrame System allows you to create diverse types of layered light using a small set of elements. By swapping out our modular components, you can radically alter your light without replacing the junction box, drastically reducing costs and labor. That means the people who inhabit your space get exactly the right light, even if their needs change.



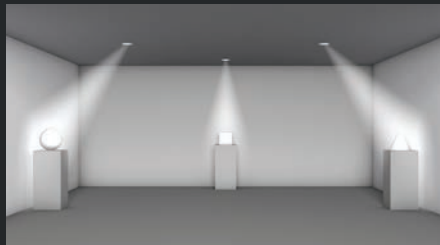
General Downlighting



Wall Wash



Spot, Narrow Flood, and Flood



Accent Lighting

“We have a holistic approach that looks at everything, the lighting and construction to how the aesthetics work, that helps us make great products. Because we’re involved in every part of the light, our products are actually superior to many high-end lights that have been cobbled together. Designing everything in-house is an advantage.”

Our modules: the heart of the OneFrame™ System

DRD2X

High-performance
Apex Series downlight



DRD2

Compact and capable
general downlight

DRD4

Adjustable downlight
packed with features

DRD2

General LED Module



The new benchmark

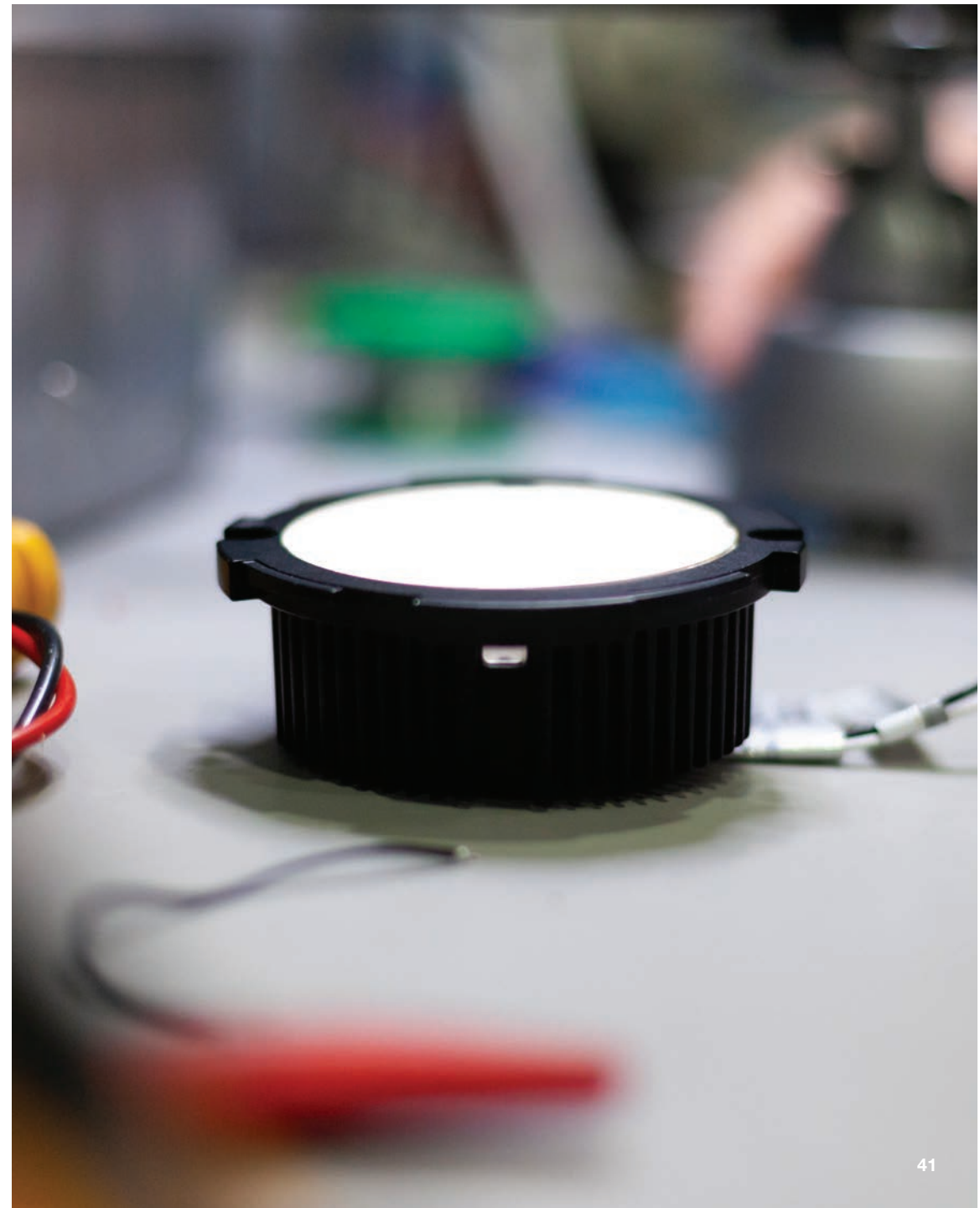
The DRD2 combines the performance of a premium light engine with an intelligent design that makes it simple to install, maintain, or replace. Powered by a 93+ CRI Cree LED chip, the DRD2 is surprisingly small so it can fit places other modules can't.

DRD2
General LED Module



Lumen Output 750lm (10.8W), 1000lm (12.8W)	Input Voltage 120 277V
Color Quality 93+ CRI, 2-step SDCM	
Color Temperatures <div><div>2700K</div><div>3000K</div><div>3500K</div><div>4000K</div></div>	Optical Options <div><div>General</div><div>Wall Wash</div></div>
Dimming TRIAC/ELV 5% 0-10V 1% Lutron Hi-lume® 1%	
Efficiency <div><div>JAB TITLE 24</div><div>ENERGY STAR</div></div>	Guarantee 50,000 hrs 5 years

“The integrated driver is a great example of how our process works. We couldn’t make the module any smaller, but in order to build the product, we needed a new way to shrink down the overall size. Eventually we realized the driver was the answer, and with a lot of hard work, we ended up creating something totally new.”



DRD2X

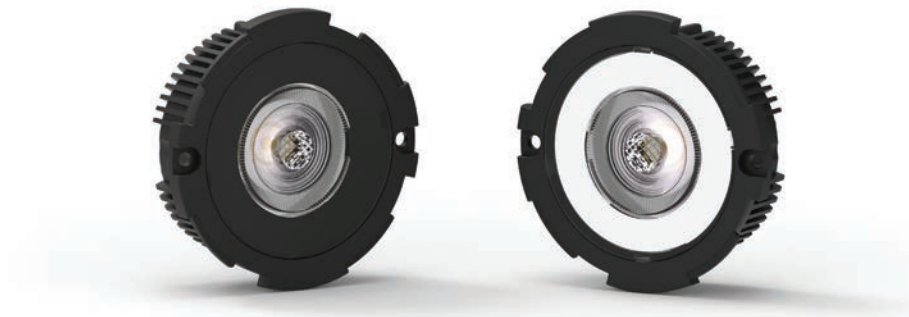
Apex Series LED Module



More power. More control.

The DRD2X takes everything that makes the DRD2 great and adds enhanced performance and more optical options. The DRD2X produces high-end, full-spectrum light in 20°, 30°, or 40° beams so you can create the perfect solution for your space. It's a compact light that produces low-glare, architectural-grade illumination without sacrificing simplicity.

DRD2X
Apex Series LED Module



Lumen Output 600lm (10W), 750lm (12.5W)	Input Voltage 120 277V
Color Quality 90+ CRI, 2-step SDCM	Center Beam Candlepower 4000cd (Spot 750lm)
Color Temperatures <div><div>2700K</div><div>3000K</div><div>3500K</div><div>4000K</div></div>	Optical Options <div><div>Spot (20°)</div><div>Narrow Flood (30°)</div><div>Flood (40°)</div></div>

Dimming TRIAC/ELV 5% 0-10V 1% Lutron Hi-lume® 1%
--

Efficiency <div><div>JA8</div><div>ENERGY STAR</div></div>	Guarantee 50,000 hrs 5 years
--	--

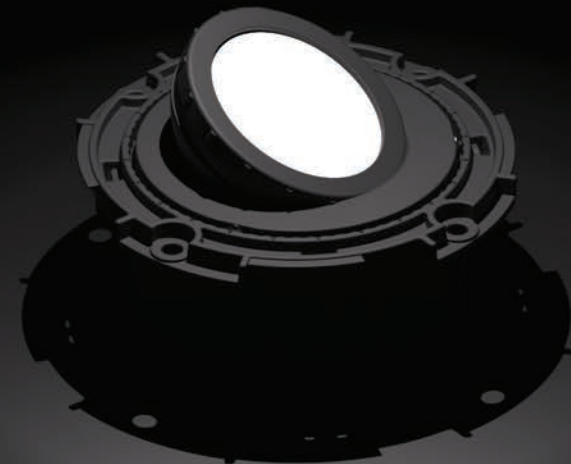
ALWAYS PUSHING FORWARD

We're constantly working to keep our lighting on the cutting edge, whether that means incorporating new technology or testing for future-forward compatibility. Our products don't just sit on the shelf – we're always thinking about how to make them smaller, more efficient, and easier to use.



Ready for the spotlight

Introducing the DRD4



DRD4

Adjustable LED Module



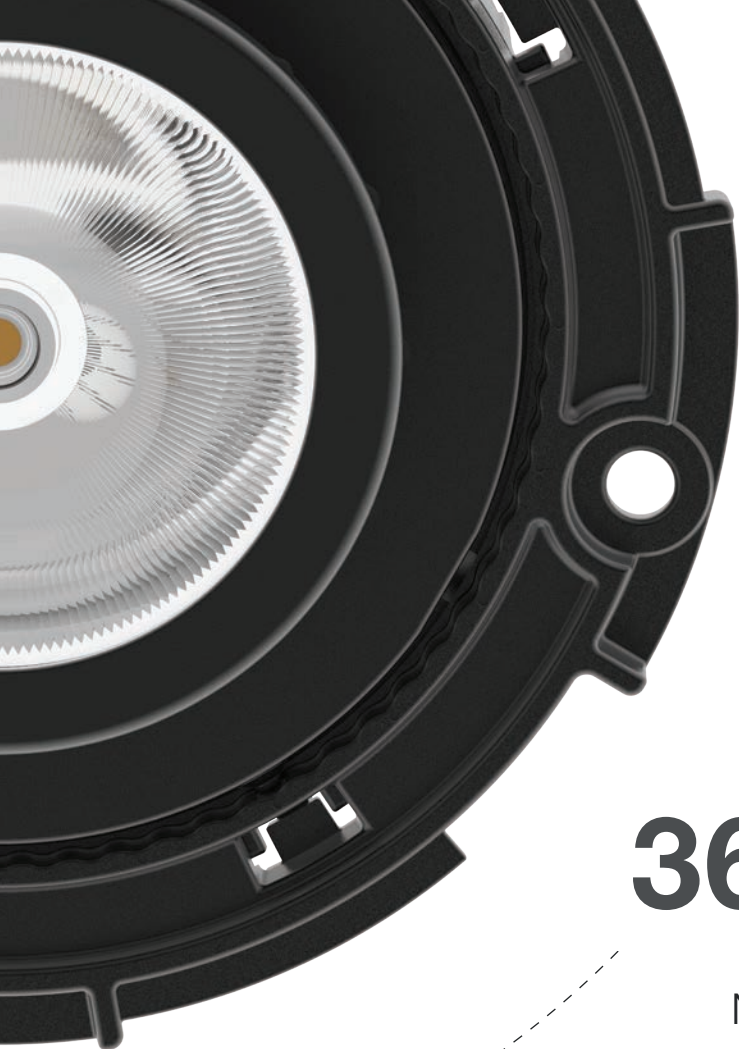
Control at your fingertips

The adjustable DRD4 brings ultimate flexibility to the OneFrame System. With an integrated driver, 20°, 30°, and 40° beam options, and field-changeable accessories, the DRD4 radically simplifies modern lighting design. It provides tool-free “hot aiming” and lockable directional beams for accents, angled walls, and more.

DRD4
Adjustable LED Module

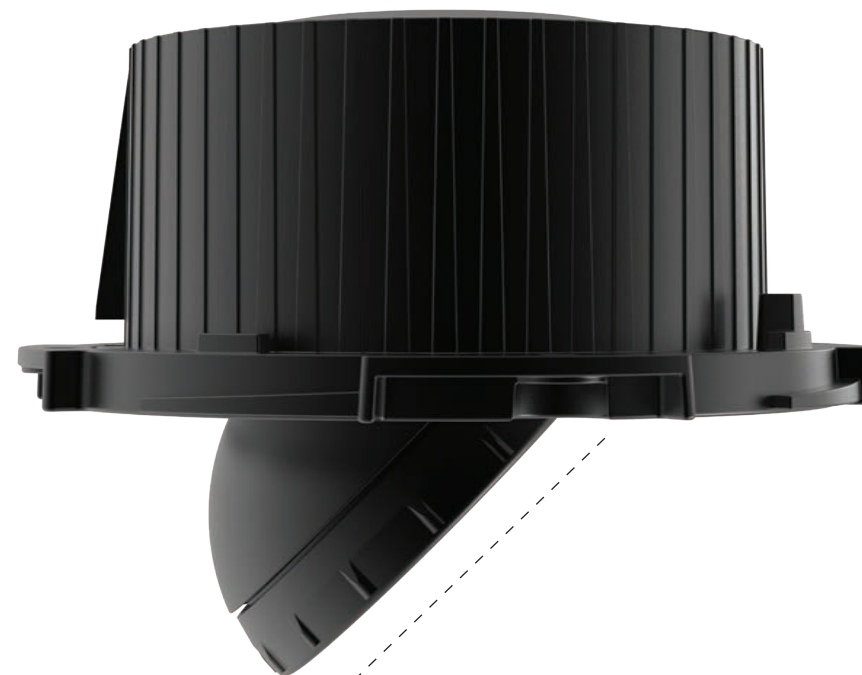


Lumen Output 650lm (9.7W), 800lm (12.0W)	Input Voltage 120 277V
Color Quality 90+ CRI, 2-step SDCM	Center Beam Candlepower 6000cd (Spot 800lm)
Color Temperatures <div><div>2700K</div><div>3000K</div><div>3500K</div><div>4000K</div></div>	Optical Options <div><div>Spot (20°)</div><div>Narrow Flood (30°)</div><div>Flood (40°)</div></div>
Dimming TRIAC/ELV 5% 0-10V 1% Lutron Hi-lume® 1%	
Efficiency <div><div>JA8 TITLE 24</div><div>ENERGY STAR</div></div>	Guarantee 50,000 hrs 5 years



360°

No dead spots
Full 360° directional aiming.



45°

Class-leading tilt
More flexibility for angled walls,
distant aiming, and more.

Tactile feedback

As you rotate the DRD4, you'll feel a click every 5° that gives you precise feedback and locks the light in place long after you make an adjustment.

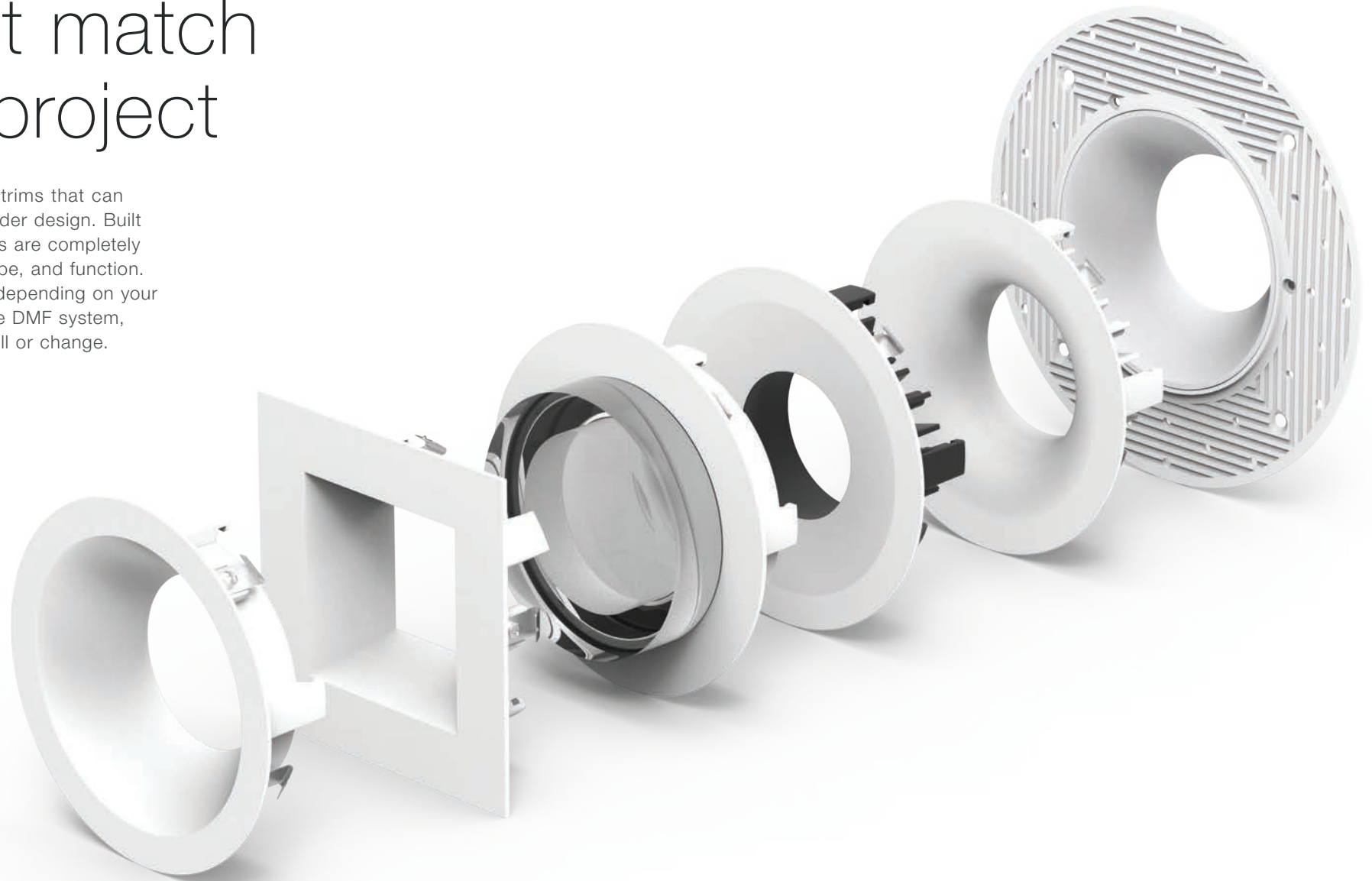


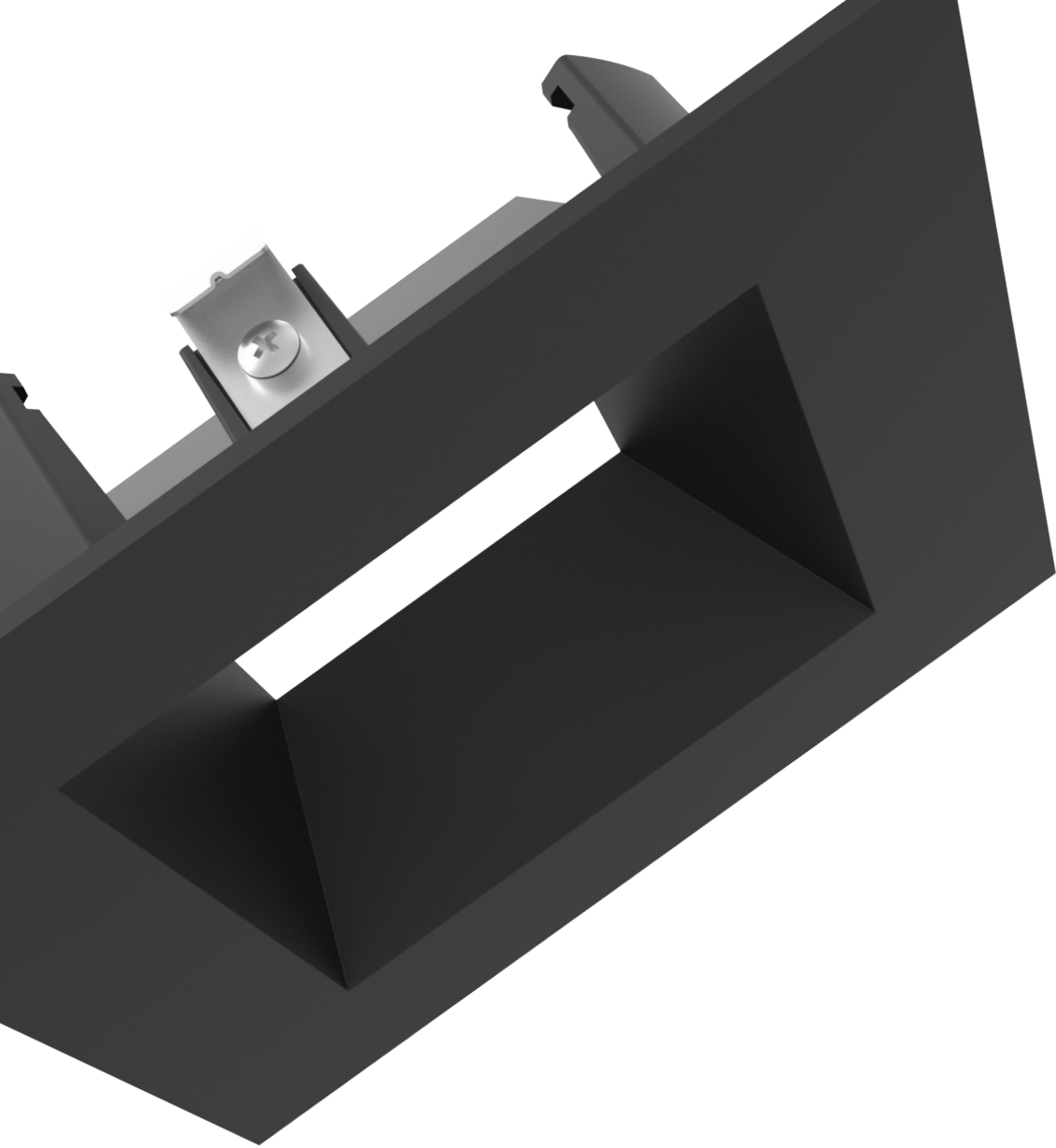
Disappearing act

Thanks to a special track that tilts inward, rather than a traditional pivot axis, the DRD4 can tilt without disrupting the clean, flat line of a ceiling plane.

A perfect match for your project

Whatever your project, DMF has trims that can integrate seamlessly into the broader design. Built from die-cast aluminium, our trims are completely customizable by color, finish, shape, and function. They can blend in, or stand out, depending on your vision. And just like the rest of the DMF system, they're exceptionally easy to install or change.





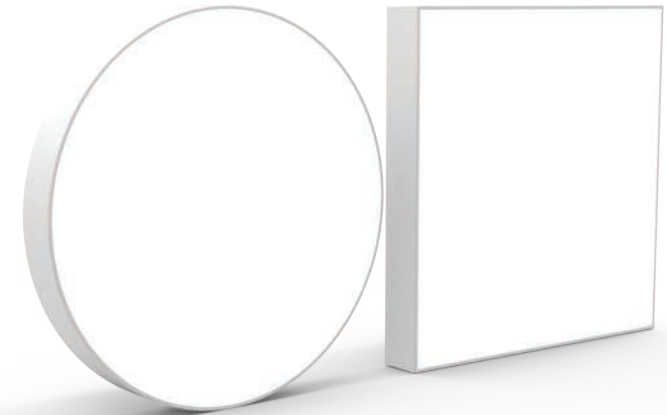
“Our trims are built from high-quality aluminum, which makes them more durable – you can really feel how solid they are. Another way they’re better is that they fit tighter to the ceiling, so they won’t sag, and they won’t leak light.”

DRD5S

Surface Mount LED Module



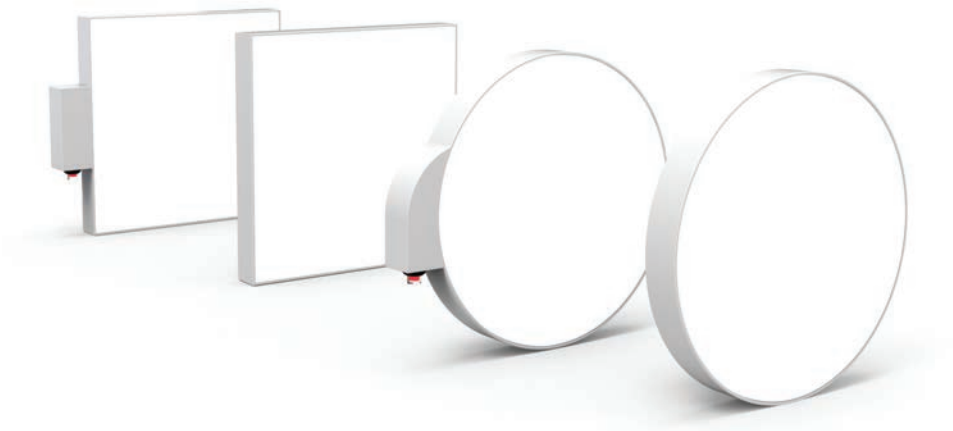
DRD5S
Surface Mount LED Module



Surface meets substance

The thinnest-in-class DRD5S redefines what's possible for a surface-mounted light through a combination of technological advances and smart design. It delivers smooth, uniform illumination while fitting into very small plenum spaces. When you turn it on, the DRD5S is practically indistinguishable from a recessed downlight.

DRD5S
Surface Mount LED Module

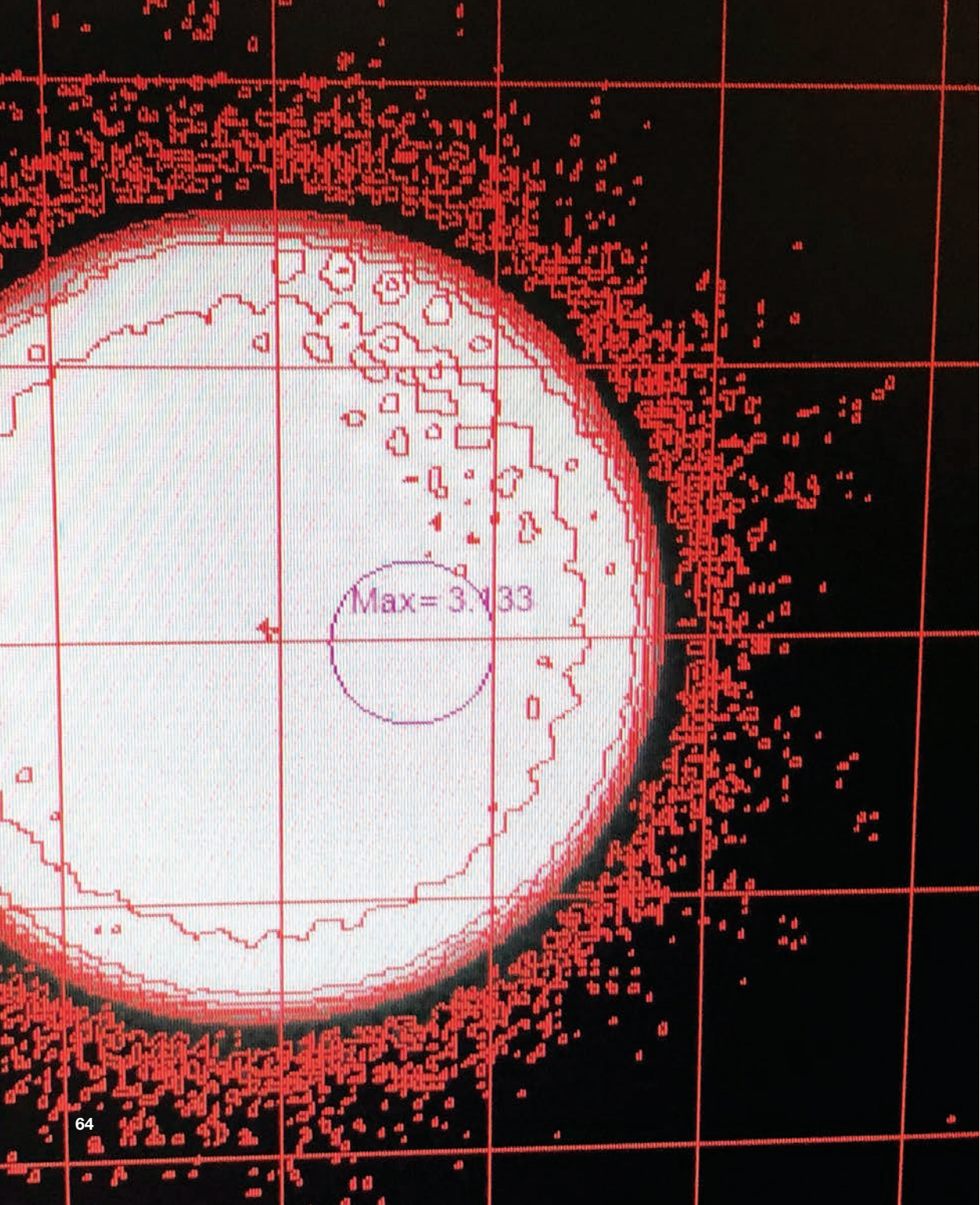


DRD5S Family

Round, Square, and Emergency Options

The DRD5S family of lights achieves the perfect balance of aesthetics, performance, and value. Available in a round or square version, the DRD5S also offers an emergency driver option with an integrated test switch to keep your design seamless.





EVERY PART COUNTS

At DMF, a single team guides a project from concept to manufacturing. Our engineers think holistically about how optics, electronics, aesthetics, and usability interact. And because we make everything we can in-house, every aspect of our products works together flawlessly to deliver realistic, transformative light.



DCD1

Commercial LED Downlight

The DCD1 is a compact downlight designed for demanding higher light and ceiling applications. Because it's compatible with a range of DMF Classic Frame and Trim options, the DCD1 streamlines specification and installation. The module is a powerhouse, featuring an advanced LED chip that delivers up to 2000 lumens of 90+ CRI general downlighting.



DCD2

Commercial LED Downlight

When you need more flexibility in your commercial light, the DCD2 is a great choice. Built for high light and ceiling projects, the DCD2 produces up to 4000 lumens of architectural-grade light through 30°, 45°, and 60° beam options. The DCD2 can be paired with deep trims for optimal light cut-off and greater visual control.





“We’re focused on engineering lighting that lasts, not chasing trends.”

Sleek Simple Radiant

DCC2

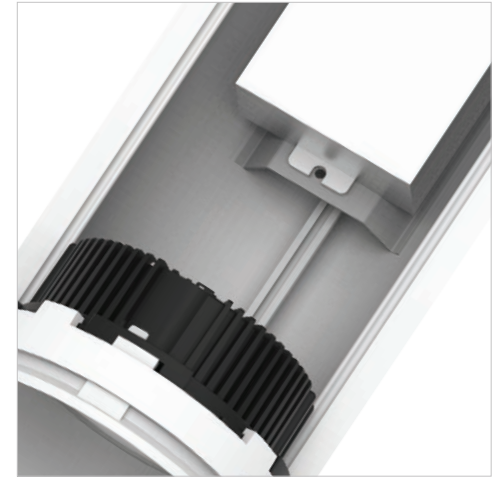
The DCC2 cylinder's combination of precise illumination and refined aesthetics can take your designs to new heights. Available in a range of form factors, mounting options, and color finishes, the DCC2 can be configured exactly the way you want it. Like our in-ceiling lights, it's compatible with multiple LED modules, and its die-cast aluminum materials ensure long-lasting performance indoors or outdoors.



DCC2
LED Cylinder



No visible hardware



High-performance dimming



Low-profile backplate



Magnetic coverplate



The DRD2 works with our cylinders as well as the OneFrame System, so you only need one lamp source for recessed, surface, pendant and wall lighting.





Magleby Estate Homes, Utah



Olson Kundig, 2nd & Pike, Seattle



CIRCA Towers, Los Angeles



Irvine Company, California





Our customers trust us because they know they can trust our products. We test all our products in our in-house labs to make sure they meet our stringent standards.

We check for everything from dimmer compatibility to fixture-to-fixture color consistency, ensuring that the lights you buy perform exactly as advertised.





Thanks to this approach to quality control, DMF fixtures have a 99.4% success rate.

That's a number you can put your trust in.

“To me, customer service is all about going the extra mile. Sometimes that means working with a specifier to get the most out of a budget, or staying late at the warehouse to help a customer get a critical product out ASAP.”





DMF knows how to deliver

Our decades of experience have taught us that treating customers right is about getting them the right products at the right time. DMF's national network of warehouses and suppliers means that wherever you are, the lights you need are never far away. Our time-tested supply chain and nimble logistics ensure fast, accurate deliveries that will keep your project moving forward.

“Many of the developers and contractors we’ve worked with for years are family businesses. We’ve been around long enough to see parents hand over the reins to their children, and the younger folks keep coming back to us. We’re proud to keep those relationships generation after generation.”

- Faye Chad
Founder



Contact

We're here for you

Have questions about a product? Ready to place an order? Get in touch with our friendly team.

T: 800.441.4422

E: info@dmflighting.com

1118 East 223rd Street,
Carson, California 90745

Stay informed

For our full line of products, the latest documentation, news, and events, please visit:

dmflighting.com

Keep in touch

Follow DMF Lighting on your favorite social network.

facebook.com/dmflighting

instagram.com/dmflighting

twitter.com/dmflighting

vimeo.com/dmflighting

linkedin.com/dmflighting

