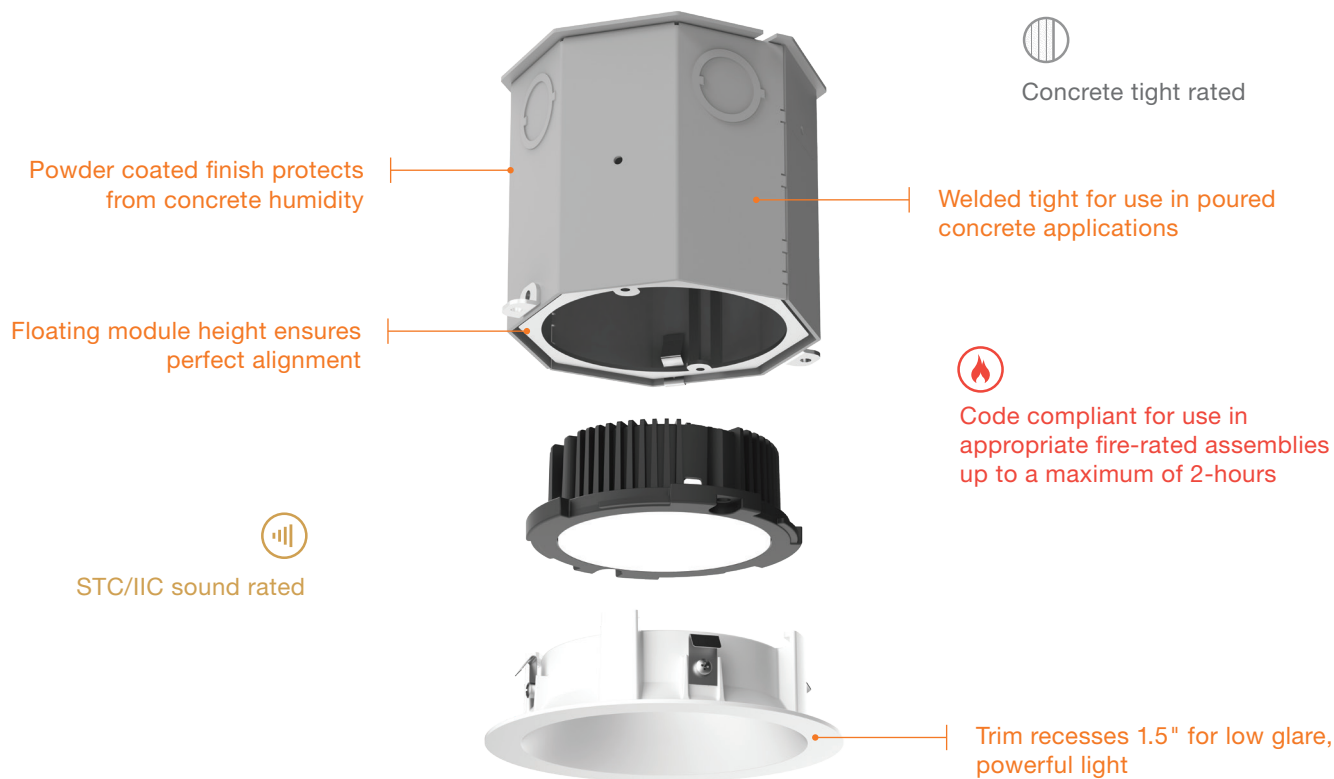


# OneFrame DRDHNJC

Concrete Application Recessed LED Downlight



## Specs at a Glance

Application	Poured Concrete New Construction, Deep Junction Box
Light Module	DRD2, DRD2X, DRD4
Lumen Output (Power)	DRD2: 750 lm (11.8W), 1000 lm (14.7W); DRD2X: 600 lm (10.0W), 750 lm (12.5W); DRD4: 650 lm (9.7W), 800 lm (12.0W)
Color Quality	90+ CRI, 2-step SDCM
CCT Options	2700K, 3000K, 3500K, 4000K
Lifetime (L70)	50,000 hrs
Input Voltage	120/277V
Dimming	Dimming down to 5% for TRIAC/ELV at 120V
Trim Shape	Round, Square
Trim Style	Standard, Hyperbolic, Pinhole, Beveled Pinhole, Wall Wash
Trim Finish	White, Black, Silver (silver reflector, white flange), Custom
Decorative	Closed Bottom Frosted Finish, Closed Bottom Clear Finish, Closed Bottom Clear Outside Frosted Inside Finish, Open Bottom Frosted Finish
Listings	cULus Listed, ENERGY STAR® qualified, California Title 24 2016 JA8 compliant, UL Listed for Wet Location, DRDHNJD metallic outlet box certified UL514A, STC/IIC Sound Rated, Concrete Tight
Warranty	5 years

# Product Selection Example

See spec sheets for complete ordering information and options

## FRAME-IN KIT (Product Code Example: DRDH + N + JC = DRDHNJC)

PRODUCT CODE	APPLICATION	APERTURE
<input type="text"/>	<input type="text"/>	<input type="text"/>
<b>DRDH</b> Housing	<b>N</b> New Construction	<b>JC</b> Deep Junction Box, Concrete

## LIGHT ENGINE (Product Code Example: DRD2M + 7 + 9 + 27 = DRD2M927)

PRODUCT CODE	LUMENS (WATTS)	CRI	CCT
<input type="text"/>	<input type="text"/>	<input type="text"/>	<input type="text"/>
<b>DRD2M</b> Module	<b>7</b> 750 lm (11.8W)	<b>9</b> 93+ CRI	<b>27</b> 2700K
	<b>10</b> 1000 lm (14.7W)		<b>30</b> 3000K
			<b>35</b> 3500K
			<b>40</b> 4000K

## TRIM (Product Code Example: DRD2T + R + JD + S + WH = DRD2TRJDSWH)

PRODUCT CODE	SHAPE	APERTURE	STYLE	FINISH	OPTION
<input type="text"/>	<input type="text"/>	<input type="text"/>	<input type="text"/>	<input type="text"/>	<input type="text"/>
<b>DRD2T</b> Trim	<b>R</b> Round	<b>JD</b> Deep Junction Box	<b>S</b> Smooth	<b>WH</b> White	<b>[Blank]</b> None
			<b>H</b> Hyperbolic	<b>BK</b> Black	<b>FL</b> Flangeless
			<b>P</b> Pinhole	<b>SW</b> Silver Reflector w/ White Flange	
			<b>B</b> Beveled Pinhole	<b>CC</b> Custom Color	

## Dimensions



**DRDHNJC**  
 Deep Junction Box  
 Concrete New Construction  
 Frame-in Kit

