

# DID4 & SquareFrame

## Adjustable Integrator Recessed Downlight

New Construction  
Deep Junction Box



Project:

Type:

Product Code:

Date:

Spec Sheet V - 03.01.21

### ENGINEERED FOR CUSTOM INTEGRATORS

**FULLY ADJUSTABLE** 360° directional aiming for complete light coverage

**PRECISE CONTROL** Class leading 45° tilt with 15°, 25° or 40° field-changeable light distributions

**DIM TO DARK** Smooth, flicker-free dimming down to 1% with centralized or local control

**FAST INSTALL** Integrated driver, plug-and-play connection, and Twist & Lock Trims

**MODULAR DESIGN** Flexibility during and after installation with interchangeable modules, optics and trims

#### OPTICAL

##### Adjustment

360° directional aim, 45° tilt

##### Delivered Lumens (Power)

750 lm (9.5W), 1000 lm (12.5W)

##### Color Quality

93+ CRI, 2-step SDCM

##### Color Temperature

2700K 3000K 3500K  
4000K Warm Dim (3000–1800K)

##### Beam Spread

Narrow Spot (15°) Flood (40°)  
Spot (25°) Linear (60° x 30°)

##### Specialty Lens

Hexcell Louver

#### PHYSICAL

##### Application

New Construction

##### Aperture

4" Square Deep Junction Box

##### Ceiling Thickness

½" up to 1¾"

#### TRIMS

##### Available Trims

Round on Square, Pinhole, Beveled Pinhole, Flangeless

##### Trim Finish

White, Black, Silver, Custom

#### ELECTRICAL & CONTROLS

##### Input Voltage

120 / 277V

##### 1% Dimming

TRIAC/ELV, Lutron EcoSystem

#### RATINGS

##### Housing Ratings

- Code compliant for use in fire-rated assemblies up to a maximum of 2-hours
- STC/IIC Sound Rated
- ASTM E283 Certified Air Tight
- IC (Insulation Contact) Rated

##### Module Ratings

- UL Listed for Damp Location



Declare.



## PRODUCT BUILDER

## SQUAREFRAME HOUSING

PRODUCT CODE		APPLICATION		APERTURE		DRIVER	
<input type="text"/>		<input type="text"/>		<input type="text"/>		<input type="text"/>	
DRDH	Housing	N	New Construction	JS	Square Junction Box	[Blank]	Integrated TRIAC/ELV
						7C4	Lutron EcoSystem <sup>1</sup> , 750 lm
						10C4	Lutron EcoSystem <sup>1</sup> , 1000 lm
						10CW	Lutron EcoSystem <sup>1</sup> , 1000 lm, Warm Dim

## DID4 MODULE

PRODUCT CODE		LUMENS		CRI		CCT		BEAM SPREAD		FINISH		SPECIALTY LENS		DIMMING	
<div></div>		<div></div>		<div></div>		<div></div>		<div></div>		<div></div>		<div></div>		<div></div>	
DID4M	Module	07	750 lm	9	93+ CRI	27	2700K	NS	Narrow Spot (15°) <sup>3</sup>	[Blank]	Black	[Blank]	None	T	Integrated TRIAC/ELV
		10	1000 lm			30	3000K	SP	Spot (25°)	W	White	H	Hexcell		
						35	3500K	FL	Flood (40°)					A	Alternate <sup>1</sup> for use with Lutron EcoSystem
						40	4000K	LS	Linear (60° x 30°)						
						3W	Warm Dim <sup>2</sup>								

## SQUAREFRAME TRIM

PRODUCT CODE		SHAPE		APERTURE		STYLE		FINISH		OPTION	
<input type="text"/>		<input type="text"/>		<input type="text"/>		<input type="text"/>		<input type="text"/>		<input type="text"/>	
DRD2T	Trim	S	Square	JS	Square Junction Box	Q	Round on Square	WH	White	[Blank]	None
						P	Pinhole <sup>4</sup>	BK	Black	FL	Flangeless <sup>4,5</sup>
						B	Beveled Pinhole <sup>4</sup>	SW	Silver Reflector, White Flange		
								CC	Custom Color		

DRDHX-MUD-SFL	Flangeless Mud Plate (Required with Flangeless Trim)
---------------	--

<sup>1</sup> Lutron EcoSystem refers to LDE1 Hi-lume 1% EcoSystem LED driver with Soft-on, Fade-to-Black™

<sup>2</sup> Only available in 1000 lm

<sup>3</sup> Not available in Warm Dim CCT

<sup>4</sup> Only available in White or Custom Color finish

<sup>5</sup> Requires DRDHX-MUD-FL Mud Plate

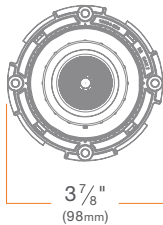
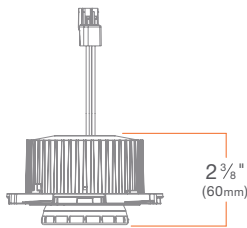


PRODUCT BUILDER

OPTICS ACCESSORIES

PRODUCT CODE	
<div></div>	
DID4X-NS	Narrow Spot (15°)
DID4X-SP	Spot (25°)
DID4X-FL	Flood (40°)
DID4X-LS	Linear Spread (60° x 30°)
DID4X-OP	Optics Kit: Narrow Spot (15°), Spot (25°), Flood (40°), Linear Spread (60° x 30°)
DID4X-HL	Hexcell Louver

## MODULE



## DID4

Adjustable Integrator Module

DID4M

## SUMMARY

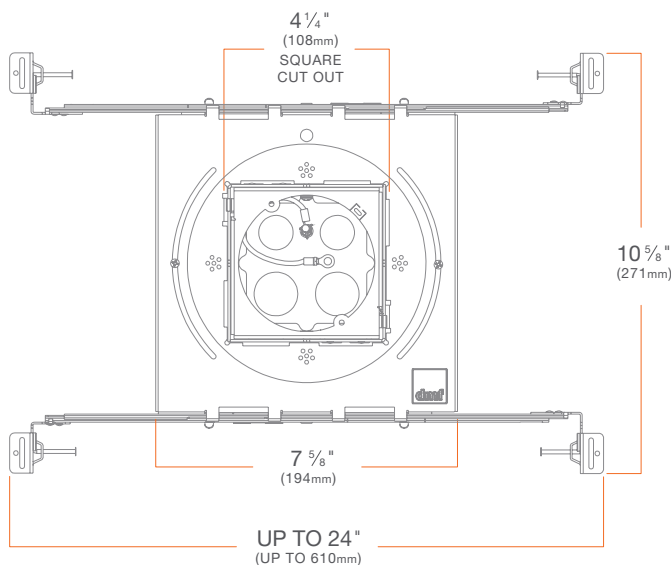
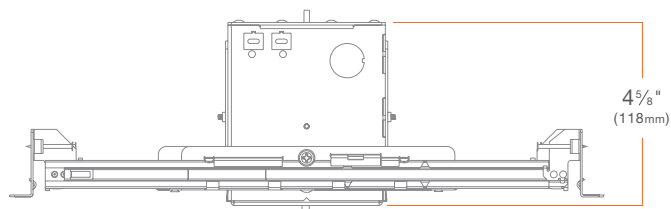
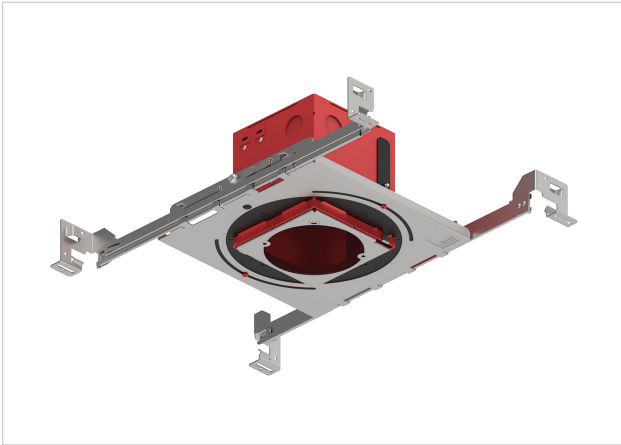
**LED CHIP:** Cree**DELIVERED LUMENS (w Trim):** 750 lm (9.7W), 1000 lm (12.0W)**EFFICACY:** 82 lm/W**COLOR QUALITY:** 93+ CRI, 2-step SDCM**CCT:** 2700K, 3000K, 3500K, 4000K**BEAM SPREAD:** Narrow Spot (15°), Spot (25°), Flood (40°), Linear Spread (60° x 30°)**ADJUSTMENT:** 360° directional aim, 45° tilt**CONNECTOR:** PowerPlug® Luminaire Disconnect Model 182**INPUT VOLTAGE:** 120/277V, 50/60Hz**DIMMING:** Down to less than 1% for TRIAC/ELV at 120V, Lutron EcoSystem at 120/277V**MAX INPUT CURRENT (120V):** 0.090 amps, 0.107 amps**MAX INPUT CURRENT (277V):** 0.042 amps, 0.050 amps**POWER FACTOR:** Greater than 0.9**TOTAL HARMONIC DISTORTION:** Less than 20%**AMBIENT OPERATING TEMPERATURE:** -20°C to 40°C**PHOTOMETRIC TESTING:** Tested in accordance to IESNA LM-79-2008**LISTINGS:** ENERGY STAR® qualified\*, California Title 24 2016 JA8 compliant, UL Listed for Damp Location, cULus Listed, Declare**LIFETIME:** 50,000 hours at 70% lumen maintenance**WARRANTY:** 5 year limited warranty

## WARM DIM OPTION

**LED:** Bridgelux LED, **DELIVERED LUMENS (w Trim):** 1000 lm (12.0W),**EFFICACY:** 83 lm/W, **CCT RANGE:** 3000K - 1800K, **MAX INPUT****CURRENT (120V):** 0.11 amps, **MAX INPUT CURRENT (277V):** 0.047 amps

\*Excludes Pinhole Trims

## HOUSING



## SquareFrame

New Construction

Deep Square Junction Box

**DRDHNJS**

## SUMMARY

**JUNCTION BOX:** Equipped with (8) trade size knockouts (four (1/2") side, two (3/4") top, two (1/2") top) and (4) Romex knockouts (side) to allow straight conduit runs. Approved for 8 (four in, four out) #12 AWG 70°C.

**MOUNTING:** Pre-installed mounting brackets allow vertical adjustment of bar hangers up to 1".

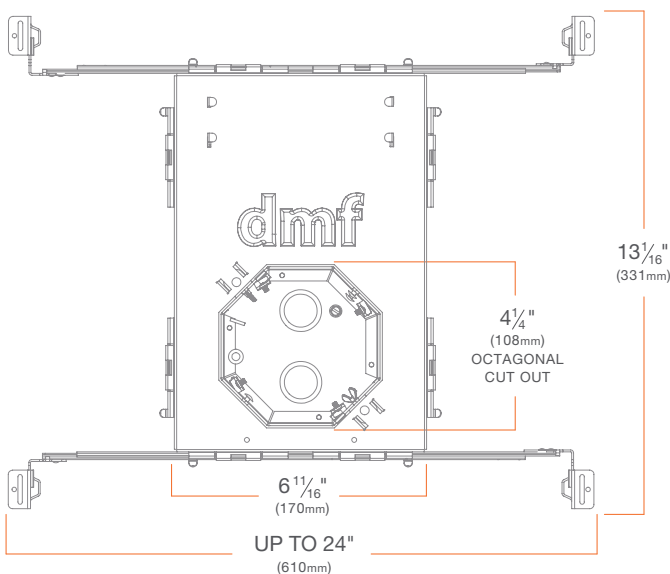
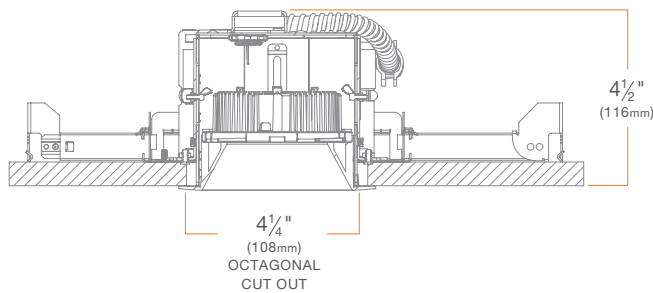
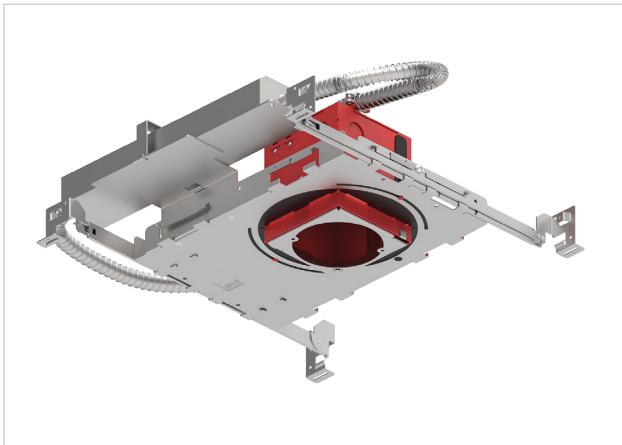
**CEILING:** 1/2" up to 1 3/4"

**CUTOUT:** 4 1/4" (108mm) square opening

**LISTINGS:** Metallic outlet box certified UL514A, code compliant for use in appropriate fire-rated assemblies for up to 2-hours, STC/IIC Sound Rated, ASTM E283 certified Air Tight, IC (Insulation Contact) rated

**WARRANTY:** 5 year limited warranty

## HOUSING - Lutron EcoSystem Dimming



## SquareFrame

Lutron EcoSystem Dimming

Deep Square Junction Box

**DRDHNJS**

- Offers compatible dimming with Lutron EcoSystem Hi-Lume® 1% protocol

### SUMMARY

**JUNCTION BOX:** Equipped with (8) trade size knockouts (four (1/2") side, two (3/4") top, two (1/2") top) and (4) Romex knockouts (side) to allow straight conduit runs. Approved for 8 (four in, four out) #12 AWG 70°C.

**MOUNTING:** Pre-installed mounting brackets allow vertical adjustment of bar hangers up to 1".

**CEILING:** 1/2" up to 1 3/4"

**CUTOUT:** 4 1/4" (108mm) square opening

**LISTINGS:** Metallic outlet box certified UL514A, code compliant for use in appropriate fire-rated assemblies for up to 2-hours, STC/IIC Sound Rated, ASTM E283 certified Air Tight, IC (Insulation Contact) rated

**INPUT VOLTAGE:** 120/277V, 50/60Hz

**MAX INPUT CURRENT (120V):** 0.090 amps (750 lm), 0.107 amps (1000 lm), 0.11 amps (1000 lm Warm Dim)

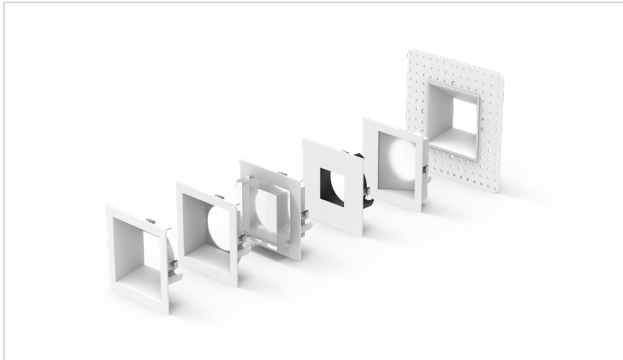
**MAX INPUT CURRENT (277V):** 0.042 amps (750 lm), 0.050 amps (1000 lm), 0.047 amps (1000 lm Warm Dim)

**POWER FACTOR:** Greater than 0.9

**TOTAL HARMONIC DISTORTION:** Less than 20%

**WARRANTY:** 5 year limited warranty

## TRIM



## SquareFrame Trims

Recessed LED Downlight Trims

**DRD2T**

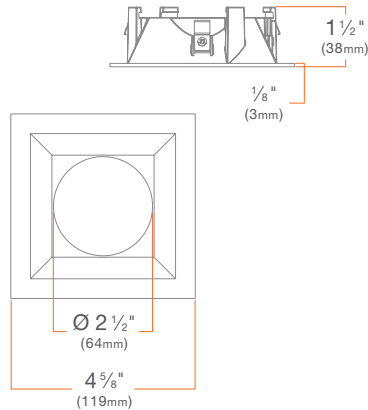
### SUMMARY

**CONSTRUCTION:** Die-cast aluminum

**INSTALLATION:** Twist & Lock (flanged trims only)

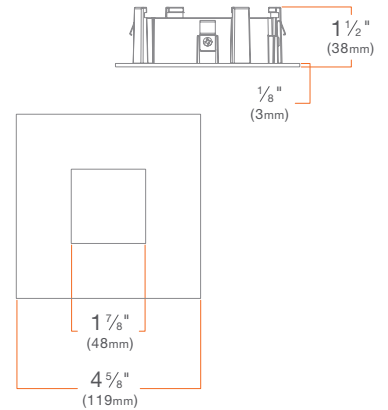
### Round on Square Trim

**DRD2TSJSQWH**



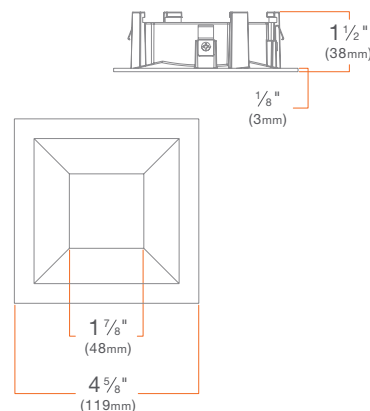
### Pinhole Trim

**DRD2TSJSPWH**



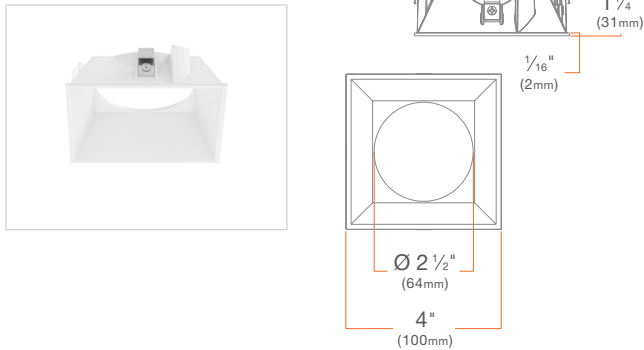
### Beveled Pinhole Trim

**DRD2TSJSBWH**



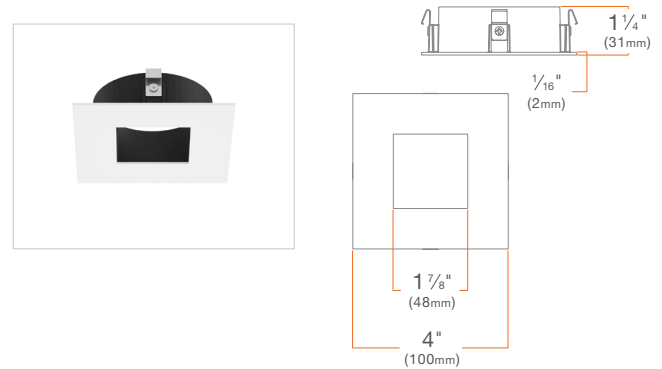
## Round on Square Flangeless Trim Insert

DRD2TSJSQWHFL



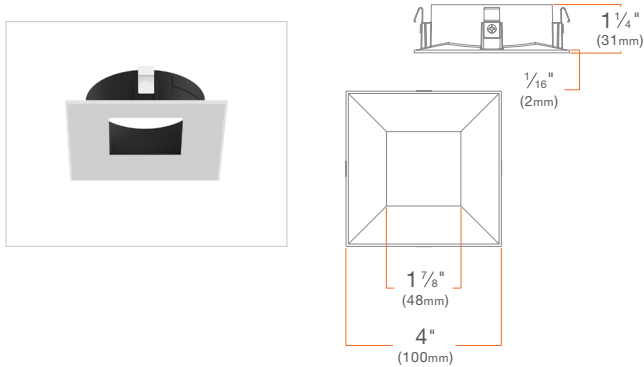
## Pinhole Flangeless Trim Insert

DRD2TSJSPWHFL



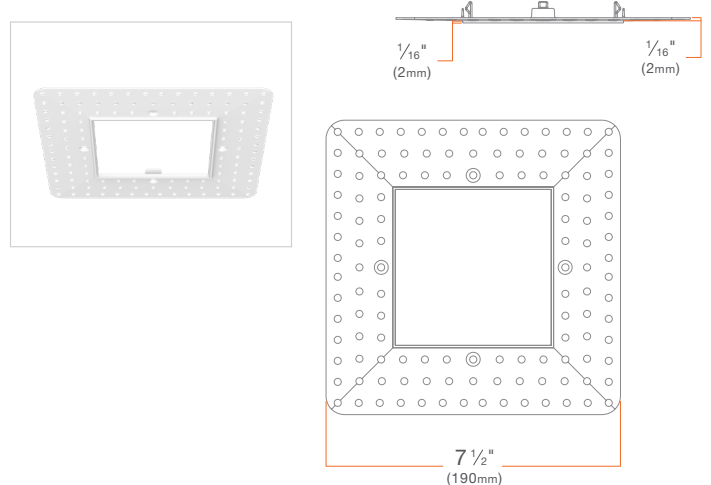
## Beveled Pinhole Flangeless Trim Insert

DRD2TSJSBWHFL



## Flangeless Mud Plate

DRDHX-MUD-SFL

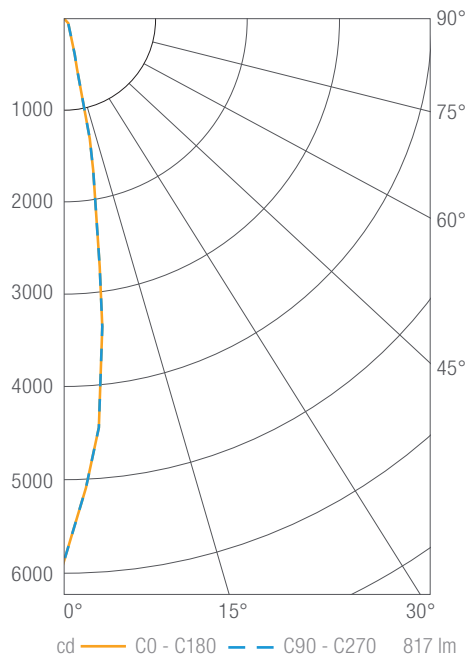




## PHOTOMETRY

### DID4 750 lm, 3000K, Narrow Spot

DID4M07930NS



#### Luminous Intensity

Gamma	C 0°
0°	5897
5°	4418
10°	1911
15°	561
20°	280
25°	165
30°	117
35°	87
40°	69
45°	57
50°	47
55°	38
60°	31
65°	23
70°	16
75°	10
80°	4
85°	1
90°	0

Values in candela

#### Zonal Lumen Summary

Zone	Lumens	Luminaire %
0-30	645	79
0-40	701	86
0-60	781	96
0-90	817	100
0-180	817	100

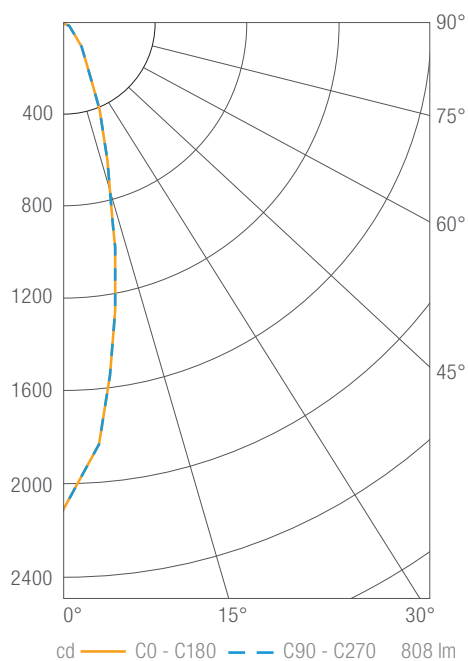
#### Illuminance Chart

Distance from LED	Foot Candles	Diameter
3'	655	0.8'
6'	164	1.7'
9'	73	2.5'
12'	41	3.3'

Beam Angle: 16°

### DID4 750 lm, 3000K, Spot

DID4M07930SP



#### Luminous Intensity

Gamma	C 0°
0°	2105
5°	1826
10°	1282
15°	800
20°	497
25°	310
30°	201
35°	137
40°	98
45°	73
50°	57
55°	45
60°	35
65°	23
70°	12
75°	5
80°	3
85°	2
90°	0

Values in candela

#### Zonal Lumen Summary

Zone	Lumens	Luminaire %
0-30	573	71
0-40	668	83
0-60	773	96
0-90	808	100
0-180	808	100

#### Illuminance Chart

Distance from LED	Foot Candles	Diameter
3'	234	1.3'
6'	58	2.6'
9'	26	3.9'
12'	15	5.2'

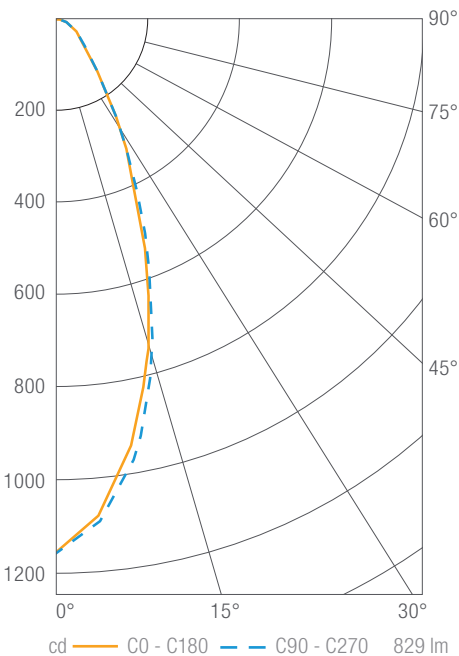
Beam Angle: 28°



PHOTOMETRY

DID4 750 lm, 3000K, Flood

DID4M07930FL



Luminous Intensity

Gamma	C 0°
0°	1158
5°	1081
10°	941
15°	765
20°	576
25°	414
30°	288
35°	192
40°	130
45°	96
50°	76
55°	61
60°	49
65°	38
70°	28
75°	18
80°	10
85°	4
90°	0

Values in candela

Zonal Lumen Summary

Zone	Lumens	Luminaire %
0-30	510	62
0-40	633	76
0-60	766	92
0-90	829	100
0-180	829	100

Illuminance Chart

Distance from LED	Foot Candles	Diameter
3'	129	2.2'
6'	32	4.5'
9'	14	6.7'
12'	8	9.0'

Beam Angle: 41°