

Summer 2022

CUSTOM INTEGRATORS

PRODUCT GUIDE

dmf



CONTENTS

Product Overview

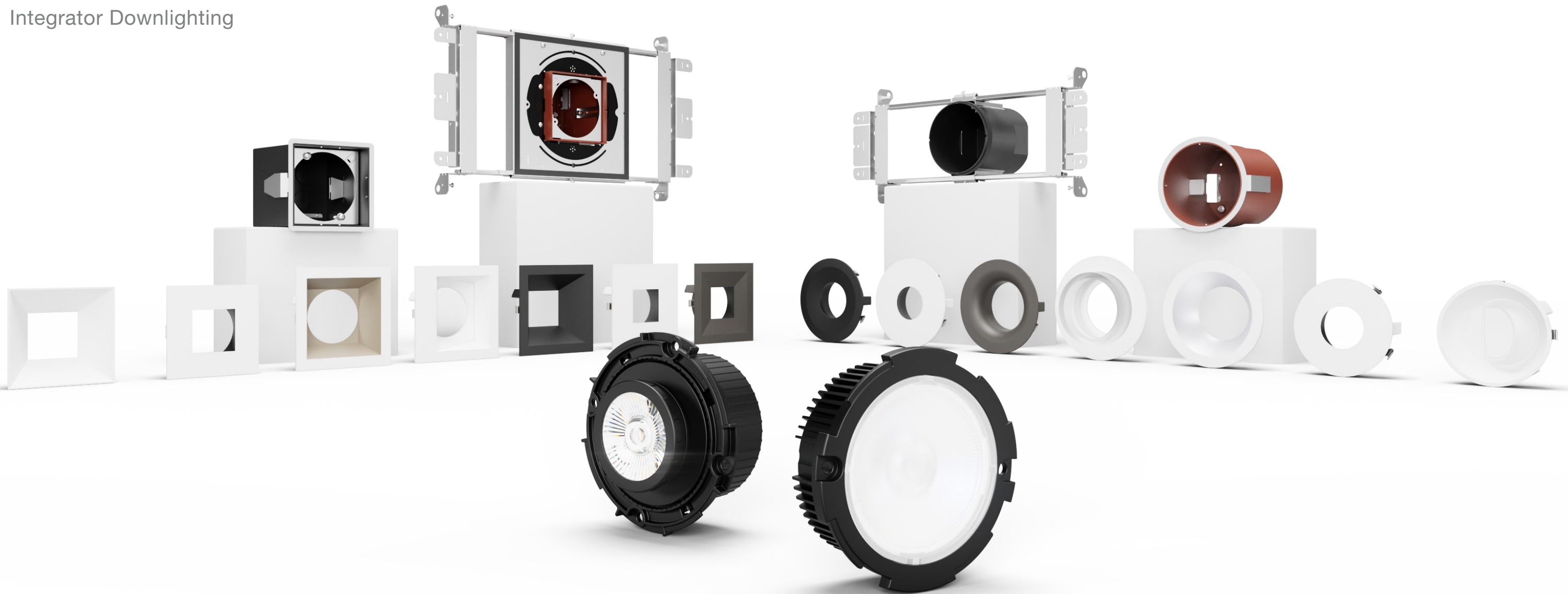
DID Series	2
Housings	4
Retrofit	6
Modules	8
Warm Dim	10
DMF Promise	11
Trims	12
Surface Mounts	14
Cylinders	16

Configuration Guide

DID2 Integrator Downlight	20
DID4 Adjustable Integrator Downlight	26
DRD5S Surface Mount Downlight	30
DCC Cylinder	34
Module Comparison	38

DID Series

Integrator Downlighting



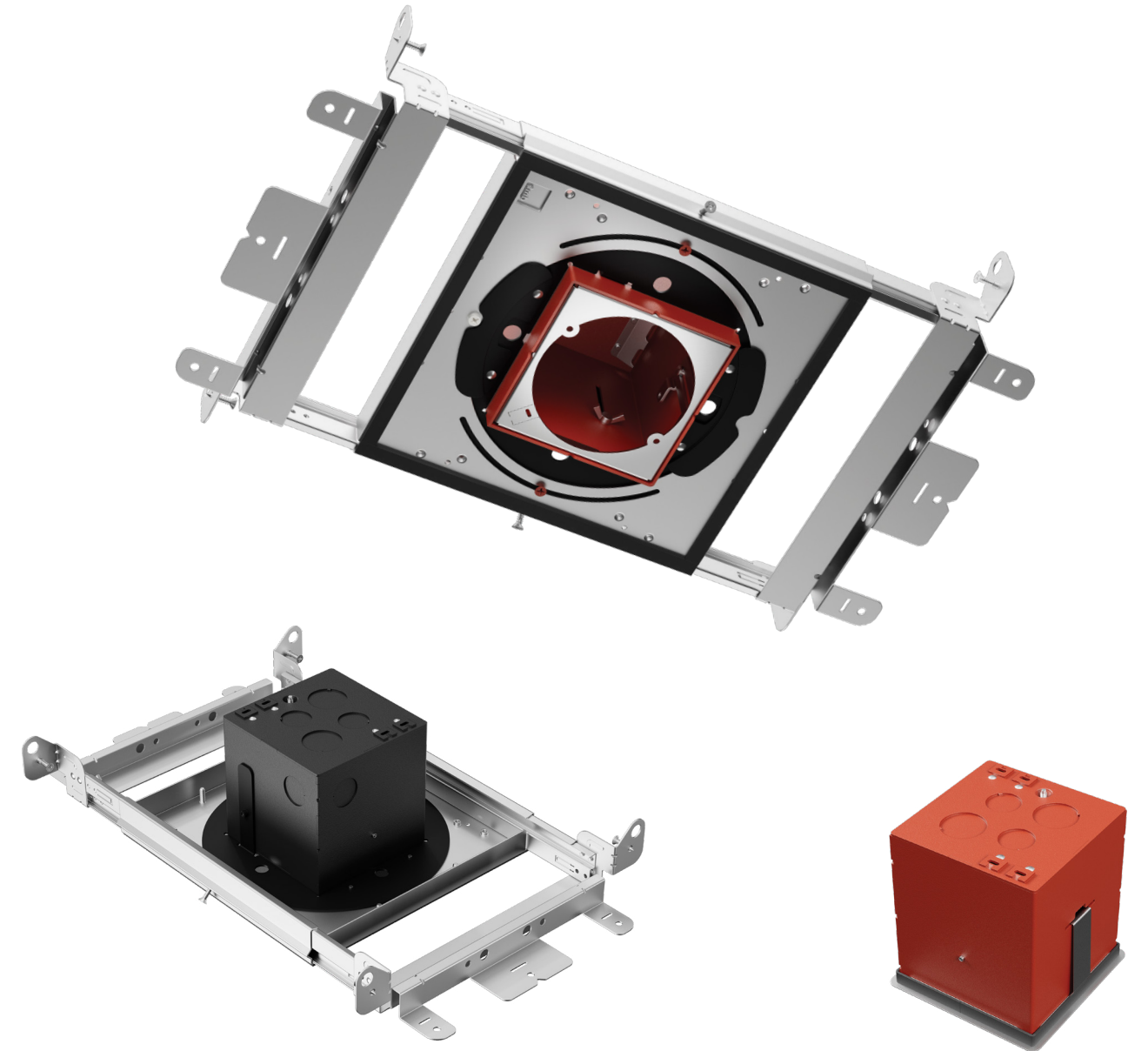
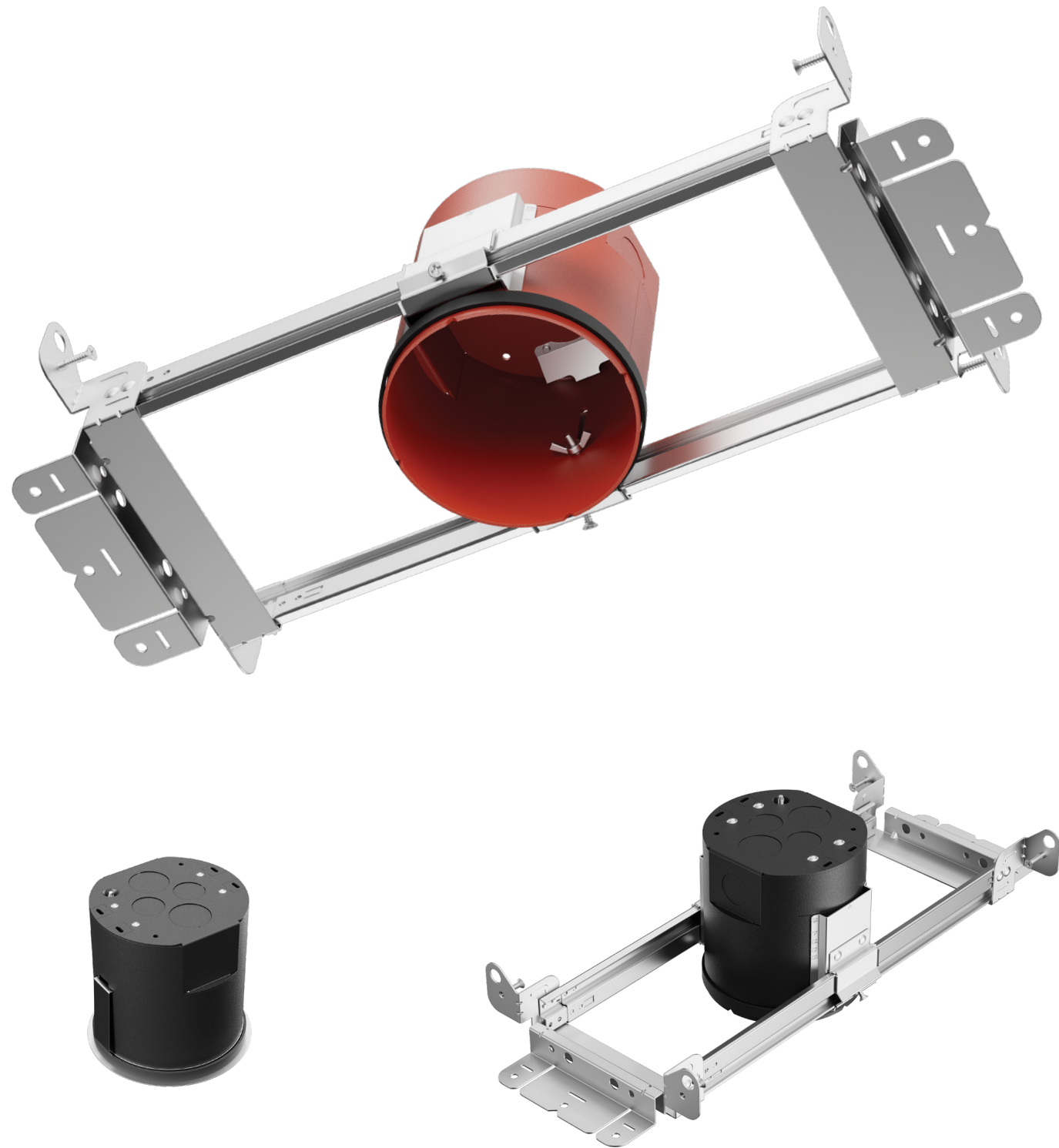
ENGINEERED FOR INTEGRATORS

The light designed to cater to your client's unique taste is finally here. From traditional to modern aesthetics, with whiter or warmer light outputs, the DID Series is engineered to be modular, allowing for complete customization.

The DID Series is optimized for residential applications and seamlessly integrates into major lighting control solutions and offers flawless dimming. It's been recognized as the standard and is exclusively available through the custom integrator channel.



HOUSINGS



M Series

4" Round & Square Housing

The all-new M Series is designed to adapt. Building on our award-winning OneFrame platform, the M Series offers even more housing rating options, including Standard, Fire-Rated and Chicago Plenum, along with Low-Profile. The compact, 4" housing installs easier and more precisely for optimal fixture placement in crowded plenum space to accommodate ductwork, framing and plumbing.

-  *Insulation Contact (IC) Rated*
-  *ASTM E283 Certified Air Tight*
-  *STC/IIC Sound Rated*
-  *Chicago Plenum*
-  *Code compliant for use in appropriate fire-rated assemblies for up to 2-hours*

RETROFIT



See things in a whole new light

Retrofitting DMF downlights into existing fixtures is the quickest, most economical path to enhancing a living space. With improved color representation and multiple interchangeable options, our lights can radically transform how a room looks and feels. Our modules feature integrated drivers and broad controls compatibility, making the process fast and simple.



MODULES



DID2

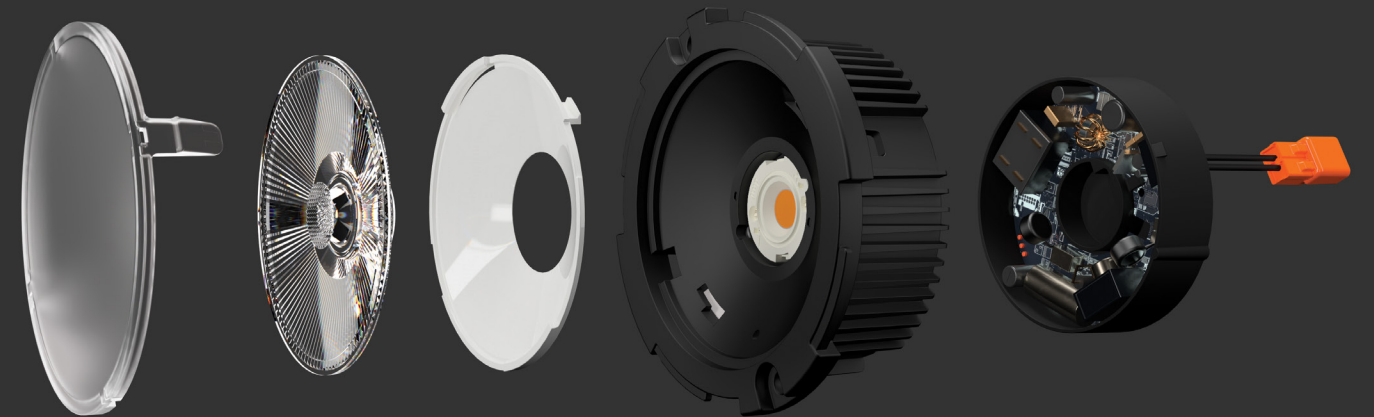
Integrator Module

The DID2 Integrator Module improves on every major metric by which quality lighting is judged. In addition, modularity has been taken a step further to provide field changeable optics and accessories. The DID2 also includes an integrated power system for simplified installation and maintenance as well as expansive compatibility with existing DMF housings and trims and most TRIAC/ELV and controls systems.

DID4

Adjustable Integrator Module

The adjustable DID4 offers ultimate lighting flexibility to custom integrators thanks to its tool-free aiming. With full 360° directional lighting and class-leading 45° tilt, the DID4 covers angled ceilings, distant aiming and more. Combined with an integrated driver and field changeable optics and accessories, the DID4 radically simplifies modern lighting design.



ADVANCED DRIVER WITH SMOOTH DIMMING DOWN TO 1%

Our in-house designed driver takes dimming down to all new levels. Integrated into the DID for ease of installation, the driver provides exceptional control with soft on/off and smooth flicker-free dimming down to 1%. And while others can accomplish this using centralized controls, ours is the only one that can do it on an incandescent dimmer or dimming circuit.

And with a multitude of options, including brightness, color temperature, light distribution, and specialty lenses, the DID Series light modules offer enhanced lighting capabilities without sacrificing stellar efficiency, high-performance and an easy to install modular design.

Warm Dim

Technology



Comfort without compromise

DMF's Warm Dim technology transforms how your spaces look and feel without sacrificing simplicity or performance. Warm Dim transitions from a bright and inviting 3000K to a warm and intimate 1800K, maintaining a consistent 93+ CRI and Energy Star rating throughout.

KEY FEATURES

- Maintains 93+ CRI throughout the dimming range
- Powered by one premium chip that utilizes color mixing phosphors to produce a warm relaxing glow
- Thoughtfully engineered to create the right light for each situation
- Part of the modular, unified DMF downlighting system that gives you the flexibility to light an entire project



THE DMF PROMISE

The new, award-winning DID Series downlights were designed for and are only available through custom integrators. We believe the DID Series provides the best solution for your lighting projects and are so confident that we are pledging the DMF Promise – Guaranteed Reliability, Guaranteed Compatibility, and Guaranteed Support.



10-Years. Guaranteed.

We are proud to provide outstanding products and solutions that are tested with the most rigorous engineering protocols. That's why we're extending our warranty to an industry best 10 years. This warranty supports our commitment to delivering downlights with superior quality, performance, and dependability.



Dimming Compatibility. Universal.

Our integrated driver was designed in-house to ensure compatibility with every popular control system specified by our customers. We guarantee the DID Series to be seamlessly compatible with every major lighting control system, local and centralized.



Tech Support. Direct.

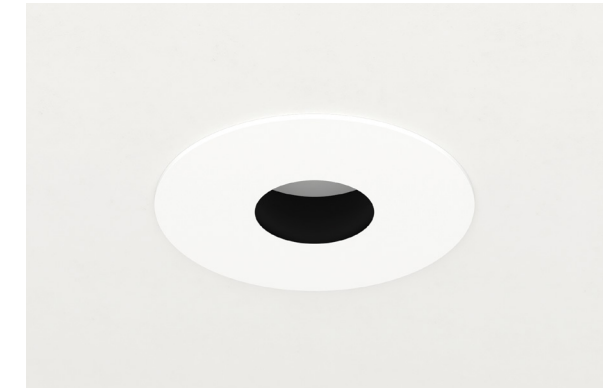
In addition to our existing customer service number for general inquiries you can now directly contact a DMF engineer for technical questions. Not a customer service rep. Not an outsourced technical support center. One of our in-house engineers in our Los Angeles office who helped design the actual product.

DMF Lighting is one of the first companies to advocate for custom integrators to adopt light fixtures as part of their business model and is a recognized leader in the industry. The DMF Promise is a natural extension of our commitment to you.

TRIMS



Round on Square
Unobstructed illumination from a square profile.



Pinhole
Accentuates light distribution for a narrow, spotlight effect. Choose between straight or beveled edges.



Hyperbolic
A unique reflector that provides completely smooth, uniform light and blends into ceilings.



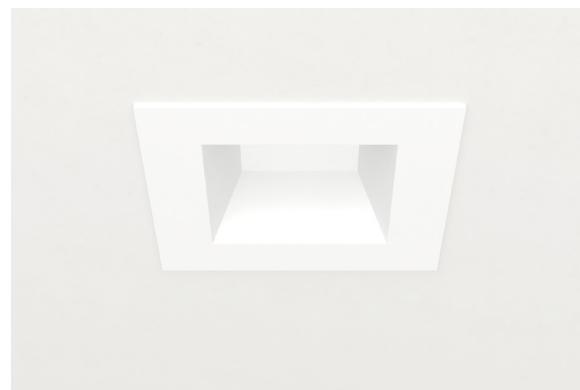
Flangeless
Flangeless wood application or use with low-profile mud flange. Available for Round, Square, Hyperbolic, Pinhole, and Wall Wash trims.

A perfect match

The materials, heft, and finish of our trims set them apart in the category. The choice of finish, shape, function, and custom colors tailor them to your client's vision. From wall wash to hyperbolic to pinhole, our trim designs accommodate any aesthetic, no matter how often it changes. And with easy installation, keeping up with your client's tastes is as simple as Twist & Lock, no tools required.



Round
Featuring a classic, elegant design that complements any design, the Round Trim pairs perfectly with any project.



Square
A modern look that's expertly die cast with sharp edges and precise corners.



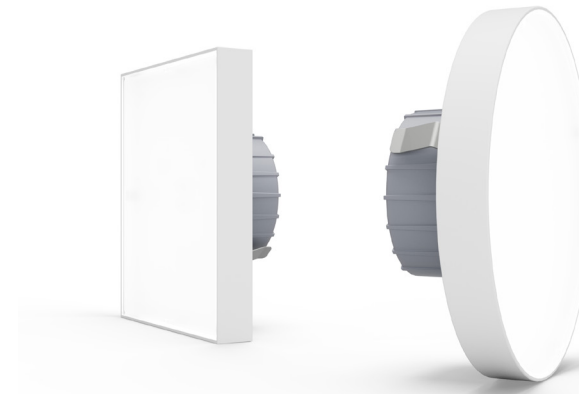
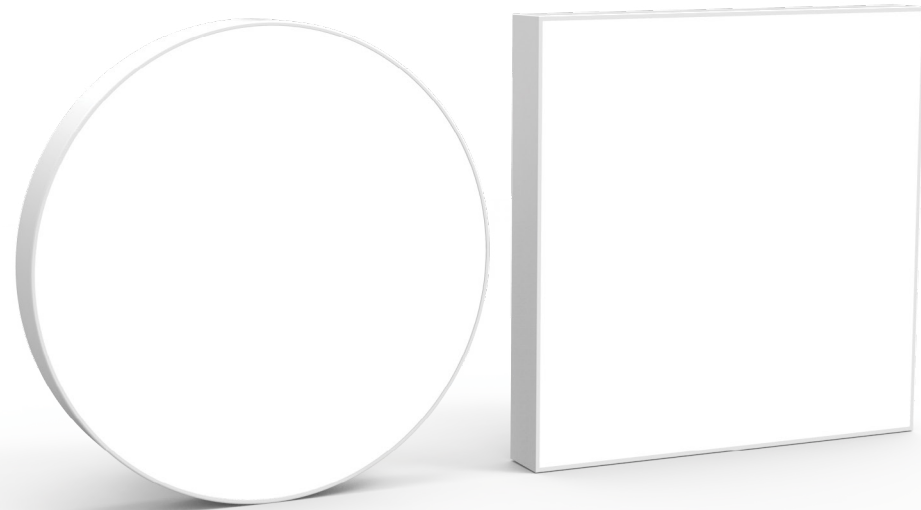
Decorative
Finely crafted acrylic that delivers a subtle, radiant glow. Options include an open or closed bottom, and frosted or clear finish.



Wall Wash
Perfect for delivering broad, consistent light across a wall surface with an unobtrusive design that stays above the ceiling plane.

DRD5S

Surface Mount Downlight



4" Round or Square

The DRD5S's minimal design is available in multiple form factors, with the 4" Round and Square matching the appearance of high-end recessed lights.

8" Round

This minimalist downlight takes everything that makes the original DRD5S exceptional, and expands on it. This area light can fill a room with inviting, accurate illumination. In addition, its SurfaceFrame compatibility simplifies installation and makes it totally interoperable with the rest of the DRD5S family.



18" Linear

A fresh take on the DRD5S, this linear area light delivers 1500 lumens of 90+ CRI light in a unique form factor. Like our other downlights in this series, the linear version features a proprietary integrated driver and small footprint, making it a great choice for new construction or retrofit applications.

Surface meets substance

The DRD5S redefines what's possible for a surface mount downlight. Packed with technical breakthroughs, the ultra-thin DRD5S matches the elegance of a high-end recessed downlight. In addition, it's more versatile because it can fit more applications, even those with limited plenum space.

KEY FEATURES

- Edgeless design disappears into the ceiling
- Clear, uniform light, no dark spots
- Ultra-thin form factor extends just 0.6" from the ceiling plane
- Snaps into place for easy installation that's completely flush with the ceiling
- Proprietary driver with smooth dimming capability down to 5%

DCC

Modern Cylinder System



Customization unmatched in the industry

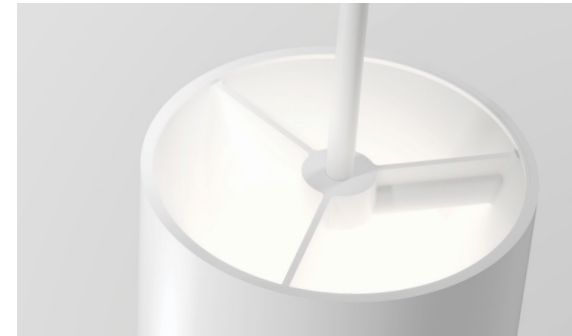
By combining a suite of customizable features with our highest performing LED modules yet, the DCC provides brilliant illumination and beautiful design versatile enough for whatever your project needs. The DCC centers around a modular LED lighting system, so it's easy to specify, install and maintain.

KEY FEATURES

- Customize your cylinder with over one million configurations
- Powered by DMF's advanced LED downlight technology
- Modular Twist & Lock trims and Plug & Play light engines for easy maintenance and onsite modifications
- Shadowless pendant uplight allows for direct and indirect lighting from a single cylinder
- Die-cast aluminum with no visible hardware for a sleek, symmetrical design

Options & Accessories

Shades, trims, specialty options, even the light engine can all be swapped out in the field, giving you control during and after the installation.



Uplight

Enables light output at elevated levels, while providing glare-free ambiance and the ability to highlight architectural elements.



Snoot

Channels light source and decreases visual cutoff angle to increase focus and mitigate glare.



Decorative Trim

Finely crafted acrylic subtly fills your space with beautiful ambient light.



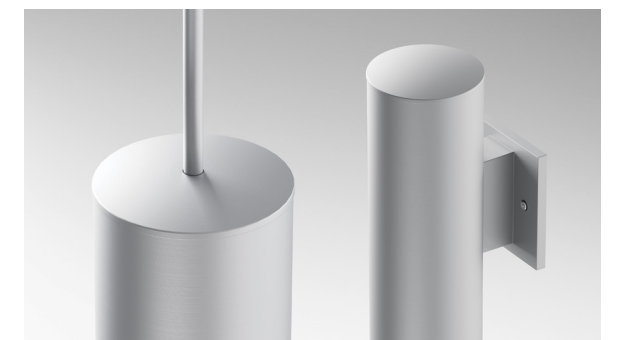
Hyperbolic Trim

Edgeless trim provides completely smooth, uniform light.



Round & Flat Shades

Re-imagined for more diverse environments while creating a more focused and comfortable general light.



Wet Location Rated

Available moisture protection options are IP65 and UL Listed as water-resistant and rated for outdoor use.



CUSTOM INTEGRATORS

PRODUCT CONFIGURATION GUIDE

DID2

Integrator Module



- Produces up to 1500 lumens of 93+ CRI lighting for natural, true-to-life colors without sacrificing stellar efficiency
- Field-changeable light distribution ranging from 15° to 90°+
- Smooth, flicker-free dimming down to 1% with centralized or local control
- Integrated driver, plug-and-play connection, and Twist & Lock trims
- Flexibility during and after installation with interchangeable modules, optics and trims

Application New Construction, Remodel, Retrofit		Compatible Housings/Fixtures M Series; SurfaceFrame; Classic Frame: 4", 5", 6", Cylinder	
Input Voltage 120/277V	Color Quality 93+ CRI, 2-step SDCM	Delivered Lumens 750 lm (9.5W), 1000 lm (12.5W), 1250 lm (14.3W), 1500 lm (17.5W)	
1% Dimming TRIAC/ELV, 0-10V, EcoSystem		Beam Spread	
Color Temperatures			
<p>2700K 3000K 3500K</p> <p>4000K Warm Dim, 3000-1800K</p>			
Emergency Lighting Optional Emergency LED Driver with integrated EM Test Switch for lighting up to 90 minutes in event of power failure			
Standards		Ratings	Guarantee
		Wet Location	

PRODUCT CODE

PRODUCT	LUMENS	CRI	CCT	BEAM SPREAD	DIMMING
DID2M Module	07 750 lm	9 93+ CRI	27 2700K	GA General Ambient (90+)	[Blank] Integrated TRIAC/ELV
	10 1000 lm		30 3000K	NS Narrow Spot (15°) ²	A Alternate - for use with Lutron EcoSystem ³
	12 1250 lm		35 3500K	SP Spot (25°)	
			40 4000K	FL Flood (40°)	
			3W Warm Dim ¹	WF Wide Flood (60°)	
				LS Linear Spread (40° x 20°)	
				SF Soft Focus	

¹ Only available in 1000 lm

² Not available in Warm Dim CCT

³ Lutron EcoSystem refers to Lutron LDE1 driver

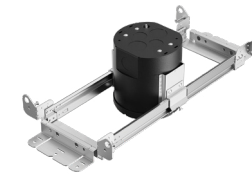
DID2

Integrator Recessed LED Downlight

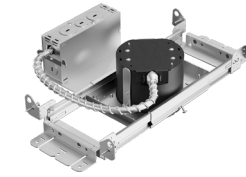
HOUSINGS & TRIMS

M Series 4" Round

HOUSINGS & TRIMS



M4NCRS
New Construction



M4LTRS
Low Profile



M4RMRS
Remodel



M4CC
Concrete Construction



M4TRSWH
Round



M4TRCWH
Square Conversion



M4TRHWH
Hyperbolic



M4TRPWH
Pinhole



M4TRBWH
Beveled Pinhole



M4TRWWH
Round Wall Wash



M4TRSWHDOF
Decorative: Open, Frosted



M4TRSWHDCF
Decorative: Closed, Frosted



M4TRSWHDCC
Decorative: Closed, Clear, Frosted Side



M4TRSWHDCCF
Decorative: Closed, Clear, Frosted Inside



M4TRSWHFL*
Round Flangeless



M4TRHWHFL*
Hyperbolic Flangeless



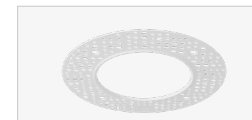
M4TRPWHFL*
Pinhole Flangeless



M4TRPWHFL*
Beveled Pinhole Flangeless



M4TRWWHFL*
Wall Wash Flangeless



M4XRMUD
Flangeless Mud Plate

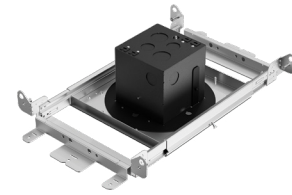
FINISH AND RATINGS OPTIONS

- White (WH)
- Black (BK)
- Bronze (BZ)
- Clear Diffuse, White Flange (CW)
- Warm Diffuse, White Flange (WW)
- Custom Color (CC)
- Ⓢ Standard (S)
- Ⓕ Fire Rated (F)
- Ⓒ Chicago Plenum (CP)
- Ⓓ Concrete Construction

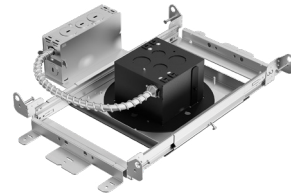
*Flangeless Mud Plate required for drywall ceiling installation; Flangeless Wood Template recommended for wood ceiling installation

M Series 4" Square

HOUSINGS & TRIMS



M4NCSS
New Construction



M4LTSS
Low Profile



M4RMSS
Remodel



<p>M4TSSWH Square</p>	<p>M4TSQWH Round on Square</p>	<p>MRTSPWH Pinhole</p>	<p>M4TSBWH Beveled Pinhole</p>	<p>M4TSWWH Wall Wash</p>
<p>M4TSSWHDCF Decorative: Closed, Frosted</p>	<p>M4TSSWHDCCF Decorative: Closed, Clear, Frosted Inside</p>	<p>M4TSSWHFL* Square Flangeless</p>	<p>M4TSQWHFL* Round on Square Flangeless</p>	<p>M4TSPWHFL* Pinhole Flangeless</p>
<p>M4TSBWHFL* Beveled Pinhole Flangeless</p>	<p>M4TSWWHFL* Wall Wash Flangeless</p>	<p>M4XSMUD Flangeless Mud Plate</p>		

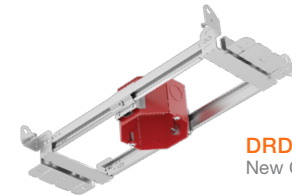
*Drywall installation requires Mud Plate; Remodel housing requires use of Mud Plate with Flangeless trims

FINISH AND RATINGS OPTIONS

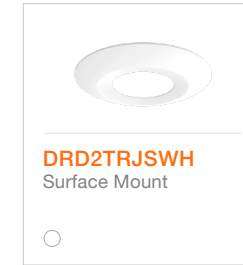
- White (WH)
- Black (BK)
- Bronze (BZ)
- Clear Diffuse, White Flange (CW)
- Warm Diffuse, White Flange (WW)
- Custom Color (CC)
- Standard (S)
- Fire Rated (F)
- Chicago Plenum (CP)

SurfaceFrame Shallow Junction Box

HOUSINGS & TRIMS



DRDHNJO
New Construction



DRD2TRJSWH
Surface Mount

Classic Remodel

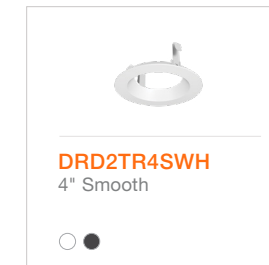
4" HOUSINGS & TRIMS



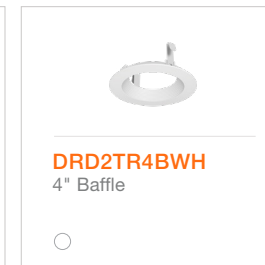
DRDHRIC4S
Shallow



DRDHRIC4
Standard



DRD2TR4SWH
4" Smooth



DRD2TR4BWH
4" Baffle



6" HOUSINGS & TRIMS



DRDHRIC6S
Standard



DRD2TR6SWH
6" Smooth



DRD2TR6BWH
6" Baffle

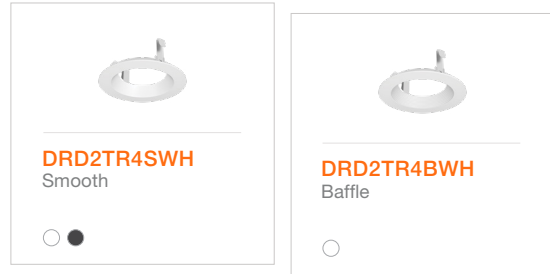


DID2

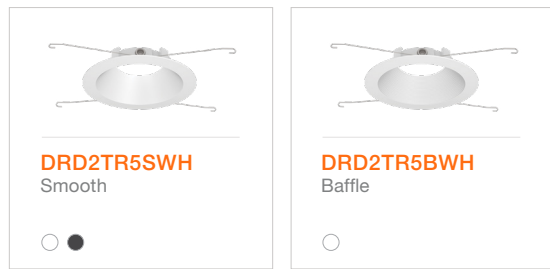
Integrator Recessed LED Downlight

Retrofit

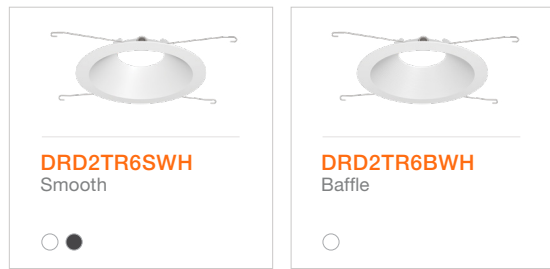
4" TRIMS



5" TRIMS



6" TRIMS



OPTICS ACCESSORIES

DID2X-GA	Conversion Kit: DID2 Module to General Ambient (90°+)
DID2X-NS	Narrow Spot (15°)
DID2X-SP	Spot (25°)
DID2X-FL	Flood (40°)
DID2X-WF	Wide Flood (60°)
DID2X-LS	Linear Spread (40° x 20°)
DID2X-SF	Soft Focus
DID2X-OP	Optics Kit: NS, S, F, WF, LS, SF

RETROFIT & OPTICS ACCESSORIES

ADAPTERS



DRD2X-QCM-ED
Edison Adapter



DRD2X-QCM-GU
GU-24 Adapter



DRD2X-QCM-M
Male IDEAL PowerPlug® Adapter



DRD2X-QCM-HW
Hardwire Adapter

FINISH OPTIONS

- White (**WH**)
- Black (**BK**)

“What really sets the product apart is the flexibility to deal with changing customer preferences. Whether it’s swapping the trim, the beam angle, color temperature, lumen output, the DID lets the custom integrator minimize their time on the job while maximizing their customers satisfaction.”

Rushi Kumar

Vice President of Engineering



DID4

Adjustable Integrator Module



- 360° directional aiming for complete light coverage
- Class leading 45° tilt with 15°, 25° or 40° field-changeable light distributions
- Smooth, flicker-free dimming down to 1% with centralized or local control
- Integrated driver, plug-and-play connection, and Twist & Lock trims
- Flexibility during and after installation with interchangeable modules, optics and trims

Application New Construction, Remodel, Retrofit	Compatible Housings/Fixtures M Series, Classic Frame: 4", 6"	
Delivered Lumens 750 lm (9.7W), 1000 lm (12W)	Input Voltage 120/277V	Color Quality 93+ CRI, 2-step SDCM
1% Dimming TRIAC/ELV, Lutron EcoSystem	Beam Spread	
Color Temperatures 		
	Adjustment 360° Directional Aim, 45° Tilt	Ratings Damp location
Standards 		

PRODUCT CODE

PRODUCT CODE	LUMENS	CRI	CCT	BEAM SPREAD	FINISH	DIMMING
DID4M Module	07 750 lm	9 93+ CRI	27 2700K	NS Narrow Spot (15°) ²	[Blank] Black	T Integrated TRIAC/ELV
	10 1000 lm		30 3000K	SP Spot (25°)	W White	A Alternate - for use with Lutron EcoSystem ³
			35 3500K	FL Flood (40°)		
			40 4000K	LS Linear Spread (60° x 30°)		
			3W Warm Dim ¹	SF Soft Focus		

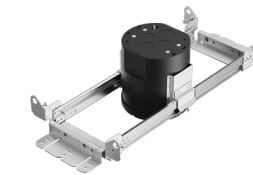
¹ Only available in 1000 lm
² Not available in Warm Dim CCT
³ Lutron EcoSystem refers to Lutron LDE1 driver

DID4

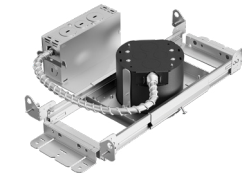
Adjustable Integrator Recessed LED Downlight

M Series 4" Round

HOUSINGS & TRIMS



M4NCRS
New Construction



M4LTRS
Low Profile



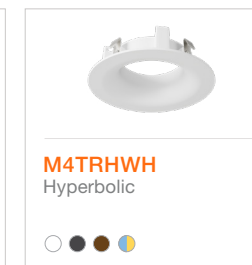
M4RMRS
Remodel



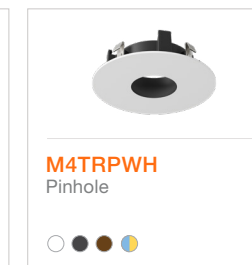
M4CC
Concrete Construction



M4TRSWH
Round



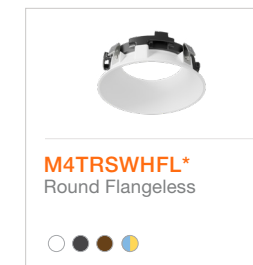
M4TRHWH
Hyperbolic



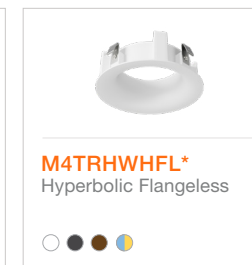
M4TRPWH
Pinhole



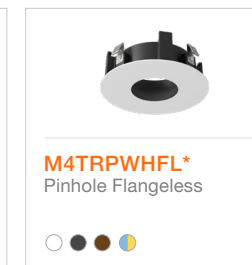
M4TRBWH
Beveled Pinhole



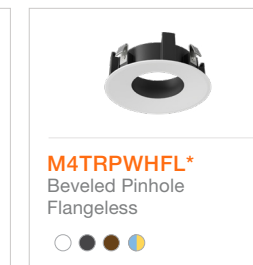
M4TRSWHFL*
Round Flangeless



M4TRHWHFL*
Hyperbolic Flangeless



M4TRPWHFL*
Pinhole Flangeless



M4TRPWHFL*
Beveled Pinhole Flangeless



M4XRMUD
Flangeless Mud Plate

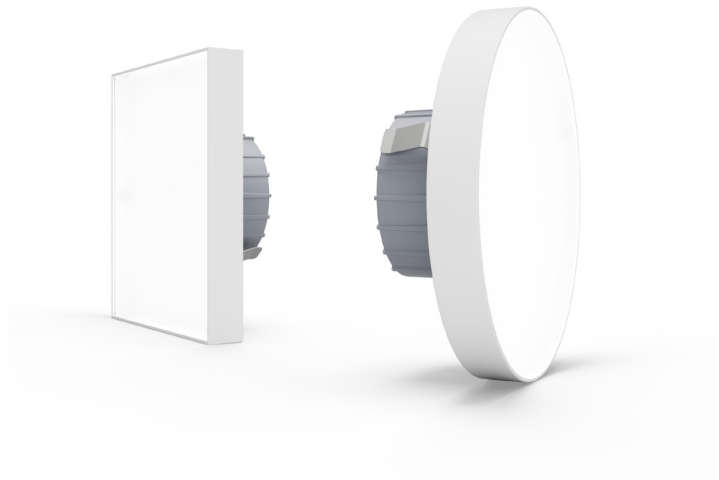
*Flangeless Mud Plate required for drywall ceiling installation;
 Flangeless Wood Template recommended for wood ceiling installation

FINISH AND RATINGS OPTIONS

- White (WH)
- Black (BK)
- Bronze (BZ)
- Clear Diffuse, White Flange (CW)
- Warm Diffuse, White Flange (WW)
- Custom Color (CC)
- Ⓢ Standard (S)
- Ⓐ Fire Rated (F)
- Ⓢ Chicago Plenum (CP)
- Ⓢ Concrete Construction

DRD5S

4" Surface Mount LED Downlight



- Thinnest in its class, extends just 0.6" from the ceiling plane
- Clear uniform light, no dark spots
- 90+ CRI LED standard, and produces up to 1000 lumens of exceptional light
- Snaps into place for easy installation and maintenance
- Proprietary-integrated driver with smooth dimming capability down to 5%

Application New Construction, Retrofit		Compatible Housings SurfaceFrame, Metallic Octagonal or Non-Metallic Round Junction Box	
Delivered Lumens 750 lm (9.0W), 1000 lm (12.0W)		Input Voltage 120V	
Color Quality 90+ CRI, < 3-step SDCM		Dimming TRIAC/ELV 5%	
Shape 4" Round, 4" Square	Finish White	Color Temperatures 	
Standards 		Ratings 	Guarantee

PRODUCT CODE

PRODUCT	SIZE	SHAPE	LUMENS	CRI	CCT	DIMMING	OPTION
DRD5S	Module 4 4" Width	R Round	07 750 lm	9 90+ CRI	27 2700K	T Integrated TRIAC/ELV	[Blank] None
		S Square	10 1000 lm		30 3000K		DF Non-Conductive Dead Front
					35 3500K		

DRD5S

8" Surface Mount LED Area Light



- 8" round area light for lighting smaller spaces including bathrooms, closets, and kitchens
- Extends just 0.6" below the ceiling plane to minimize visual profile
- Integrated driver provides down to 5% dimming capability and simplifies maintenance

Application New Construction, Retrofit		Compatible Housings SurfaceFrame, Metallic Octagonal or Non-Metallic Round Junction Box	
Delivered Lumens 1500 lm (17W)		Input Voltage 120/277V	
Color Quality 90+ CRI, < 3-step SDCM		Dimming TRIAC/ELV 5%	
Shape 8" Round	Finish White	Color Temperatures 	
Standards 		Ratings 	Guarantee

PRODUCT CODE











PRODUCT	SIZE	SHAPE	LUMENS	CRI	CCT	DIMMING
DRD5S	Module 8 8" Diameter	R Round	15 1500 lm	9 90+ CRI	27 2700K	[Blank] Integrated TRIAC/ELV
					30 3000K	
					35 3500K	

DRD5S

18" Linear Surface Mount LED Area Light



- 18" x 4" linear area light perfect for narrow applications such as corridors or kitchen islands
- Extends just 0.6" below the ceiling plane to minimize visual profile
- Integrated driver provides down to 5% dimming capability and simplifies maintenance

Application New Construction, Retrofit		Compatible Housings SurfaceFrame, Metallic Octagonal or Non-Metallic Round Junction Box	
Delivered Lumens 1500 lm (17W)		Input Voltage 120/277V	
Color Quality 90+ CRI, < 3-step SDCM		Dimming TRIAC/ELV 5%	
Shape 18" x 4" Rectangle	Finish White	Color Temperatures  2700K  3000K  3500K	
Standards    		Ratings  Wet location	Guarantee  50k HOURS  5 YEARS

PRODUCT CODE

PRODUCT	SIZE	SHAPE	LUMENS	CRI	CCT	DIMMING
DRD5S	Module 4 4" Width	L Linear	15 1500 lm	9 90+ CRI	27 2700K 30 3000K 30 3500K	[Blank] Integrated TRIAC/ELV

DRD5S

Surface Mount Series

INSTALLATION OPTIONS

DRD5S Installation Options



NEW CONSTRUCTION

SurfaceFrame Shallow Junction Box



RETROFIT

Compatible Junction Boxes



JUNCTION BOX	MIN. DEPTH	MIN. VOLUME	THROUGH-WIRE RATING
4O Octagonal (metallic)	2 1/8"	21.5 in ³	6 (three in, three out) #12 AWG
3O Round (non-metallic)	2 3/4"	18 in ³	6 (three in, three out) #12 AWG
4O Round (non-metallic)	2 3/16"	20 in ³	6 (three in, three out) #12 AWG



- Customize your cylinder with over one million configurations
- Powered by DMF's advanced LED technology
- Modular Twist & Lock trims and Plug & Play light engines for easy maintenance and on site modifications
- Shadowless pendant uplight allows for direct and indirect lighting from a single cylinder
- Die-cast aluminum with no visible hardware for a sleek, symmetrical design

Lumen Output 750 lm (10W), 1000 lm (12W), 1500 lm (20W), 2000 lm (28W), 2500 lm (37W), 3000 lm (40W)	Mount Surface, Cord, Stem, Wall
Color Quality 90+ CRI, 2-step SDCM	Size Length: Small (4"), Medium (8"), Large (12") Diameter: 4"
Color Temperatures 2700K 3000K 3500K 4000K Warm Dim, 3000 - 1800K	Finish White, Black, Brushed Aluminum, Bronze, Custom Color Stem/Cord Length 24" or 48" (standard), Up to 96" (custom)
Lighting Type Downlight Up and downlight Adjustable	Beam Spread 15° Narrow Spot 25° Spot 40° Flood 60° Wide Flood 90°+ General Ambient
1% Dimming TRIAC/ELV, Lutron EcoSystem	Trims and Shades Round Beveled Trim, Hyperbolic Trim, Snoot, Decorative Trim, Low-Profile Decorative Trim, Round Shade, Flat Shade
Input 120/277V	Ratings Wet location available
Standards JAB TIME BY ENERGY STAR UL CERTIFIED Declare.	Guarantee 50k HOURS 5 YEARS

PRODUCT CODE

CYLINDER	DC4 4" Cylinder			
MOUNT	SM Surface Mount	C2 Cord Mount, 24"	C4 Cord Mount, 48"	
	CC Cord Mount, Custom	T2 Stem Mount, 24"	T4 Stem Mount, 48"	
	TC Stem Mount, Custom	WM Wall Mount		
CYLINDER OPTIONS	S Standard	W Wet Location		
SIZE	S Small	M Medium	L Large	
LIGHT OPTIONS	D Fixed	A Adjustable		
LUMENS DOWN	07 750 lm	10 1000 lm	12 1250 lm	15 1500 lm
	20 2000 lm	25 2500 lm	30 3000 lm	
OPTICS DOWN	GA General Ambient	NS Narrow Spot	SP Spot	FL Flood
	WF Wide Flood			
ADDITIONAL OPTICS	0 None			
LUMENS UP	00 None	07 750 lm	10 1000 lm	
	12 1250 lm	15 1500 lm	20 2000 lm	
OPTICS UP	00 None	GA General Ambient	NS Narrow Spot	SP Spot
	FL Flood	WF Wide Flood		
CCT	27 2700K	30 3000K	35 3500K	
	40 4000K	3W Warm Dim		
FINISH	WH White	BK Black	BA Brushed Aluminum	
	BZ Bronze	CC Custom Color		
DRIVER	T TRIAC/ELV	C Lutron LDE1		
EMERGENCY OPTION	00 None			
TRIM / SHADE DOWN	R Round Beveled Trim	H Hyperbolic Trim	S Snoot	D Decorative Trim
	L Low Profile Decorative Trim	RWC Round Shade: White, Clear	RWW Round Shade: White, Warm	RBC Round Shade: Black, Clear
	RBW Round Shade: Black, Warm	RAC Round Shade: Aluminum, Clear	RCC Round Shade: Custom Color	FWC Flat Shade: White, Clear
	FWW Flat Shade: White, Warm	FBC Flat Shade: Black, Clear	FBW Flat Shade: Black, Warm	FBW Flat Shade: Black, Warm
	FCC Flat Shade: Custom Color			
TRIM UP	[Blank] N/A	R Round Beveled Trim	H Hyperbolic Trim	S Snoot
	D Decorative Trim	L Low Profile Decorative Trim		

ACCESSORIES

DCCX-CC	Custom Length Cord Mount (up to 156")	DCCX-RBC	Round Shade: Black Outside, Clear Diffused Inside
DCCX-TC	Custom Length Stem Mount (up to 96")	DCCX-RBW	Round Shade: Black Outside, Warm Diffused Inside
DCCX-RW	Round Beveled Trim, White	DCCX-RAC	Round Shade: Brushed Aluminum Outside, Clear Diffused Inside
DCCX-RB	Round Beveled Trim, Black	DCCX-RCC	Round Shade: Custom Color
DCCX-RA	Round Beveled Trim, Brushed Aluminum	DCCX-FWC	Flat Shade: White Outside, Clear Diffused Inside
DCCX-RZ	Round Beveled Trim, Bronze	DCCX-FWW	Flat Shade: White Outside, Warm Diffused Inside
DCCX-RC	Round Beveled Trim, Custom	DCCX-FBC	Flat Shade: Black Outside, Clear Diffused Inside
DCCX-HW	Hyperbolic Trim, White	DCCX-FBW	Flat Shade: Black Outside, Warm Diffused Inside
DCCX-HB	Hyperbolic Trim, Black	DCCX-FAC	Flat Shade: Brushed Aluminum Outside, Clear Diffused Inside
DCCX-HA	Hyperbolic Trim, Brushed Aluminum	DCCX-FCC	Flat Shade: Custom Color
DCCX-HZ	Hyperbolic Trim, Bronze	DCCX-JW	Junction Box Cover, White
DCCX-HC	Hyperbolic Trim, Custom	DCCX-JB	Junction Box Cover, Black
DCCX-S	Snoot	DCCX-JA	Junction Box Cover, Brushed Aluminum
DCCX-RWC	Round Shade: White Outside, Clear Diffused Inside	DCCX-JZ	Junction Box Cover, Bronze
DCCX-RWW	Round Shade: White Outside, Warm Diffused Inside	DCCX-JC	Junction Box Cover, Custom Color



Orum Residence, Los Angeles, California - SPF:architects, Oculus Lighting Studio

“Ultimately, we believe lighting is about enhancing the things that people love in their homes.”

Mike Libman

National Sales Director, Residential Systems

Brilliance, engineered

DMF designs and builds industry leading modular downlighting that sets the bar for flexibility, performance, and quality. Our in-house R&D lab is filled with brilliant engineers always at work improving our products and inventing new ones. They understand that light is more than illumination; light is what makes a space beautiful, useful, and ultimately, enjoyable.

Every DMF product delivers exceptional performance and aesthetics, while also saving you time and money year after year. That same ethos drives every part of our company, from our tireless customer service to our fast, intelligent distribution. If you want lighting that's not just built better, but built smarter, DMF is the partner for you.

	DID2 Integrator Module	DID4 Adjustable Integrator Module	DRD5S Surface Mount Series
APPLICATION	New Construction, Remodel, Retrofit	New Construction, Remodel, Retrofit	New Construction, Retrofit
HOUSING	M Series, SurfaceFrame, Classic Frame: 4", 5", 6"	M Series, Classic Frame: 4", 5", 6"	SurfaceFrame, Metallic Octagonal, or Non-Metallic Round Junction Box
ADJUSTMENT	–	360° directional aim, 45° tilt	–
DELIVERED LUMENS	750 lm (9.5W), 1000 lm (12.5W), 1250 lm (14W)	750 lm (9.7W), 1000 lm (12W)	4": 750 lm (9.0W), 1000 lm (12.0W) 8"/18": 1500 lm (17.0W)
COLOR QUALITY	93+ CRI, 2-step SDCM	93+ CRI, 2-step SDCM	90+ CRI, < 3-step SDCM
COLOR TEMPERATURE	2700K, 3000K, 3500K, 4000K	2700K, 3000K, 3500K, 4000K	2700K, 3000K, 3500K
WARM DIM	3000K–1800K	3000K–1800K	–
BEAM SPREAD	15° Narrow Spot, 25° Spot, 40° Flood, 60° Wide Flood, 90°+ General Ambient, 40° x 20° Linear Spread, Soft Focus	15° Narrow Spot, 25° Spot, 40° Flood, 60° Wide Flood, 60° x 30° Linear Spread, Soft Focus	Flood
OPTIONS	-	Black, White Surround	4" Round, 4" Square, 8" Round, 18" Linear
INPUT VOLTAGE	120/277V	120/277V	4": 120V; 8"/18": 120/277V
DIMMING	TRIAC/ELV 1%, Lutron EcoSystem 1%	TRIAC/ELV 1%, Lutron EcoSystem 1%	TRIAC/ELV 5%
STANDARDS	JA8 Title 24, UL certified, ENERGY STAR®, Declare	JA8 Title 24, UL certified, ENERGY STAR®, Declare	JA8 Title 24, UL certified, ENERGY STAR®, Declare
RATINGS	Wet location	Damp location	Wet location
DMF PROMISE	Yes	Yes	–
WARRANTY	10 years	10 years	5 years

dmf

DMF Lighting
1118 East 223rd Street,
Carson, California 90745
323.934.7779
info@dmflighting.com
dmflighting.com

© 2022 DMF Lighting. All Rights Reserved. Specifications subject to change without notice.
MCIGUIDE V-08.11.22

