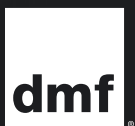


**iX Series**

Welcome to the  
Quiet Revolution





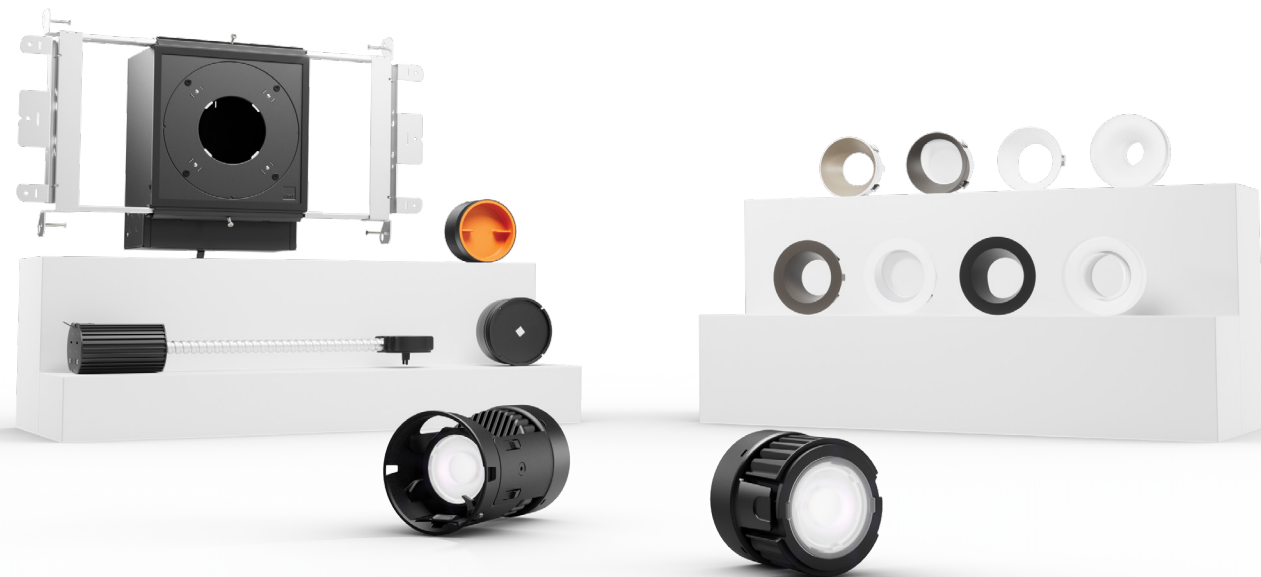
## Clean, quiet ceilings are now for the whole home

The iX Series is an all-new small aperture lighting system designed to elevate the entire home with modern, quiet ceilings and award-winning design. The traditional constraints of 2" fixtures are finally gone. Now, small aperture lighting isn't just a specialty feature. It's designed for every room in the house, and it's exclusive to the custom integrator channel.



# Superior performance in our smallest package yet

The iX Series is DMF's latest lighting system designed to be completely modular and exceptionally easy to select, order, install, and service. The Small Aperture Fixed and Adjustable modules pair with a universal housing to offer a uniquely small footprint without sacrificing light output, and it all fits together seamlessly with high-quality knife edge trims.



## Go smaller without compromise

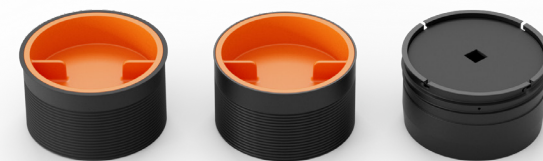
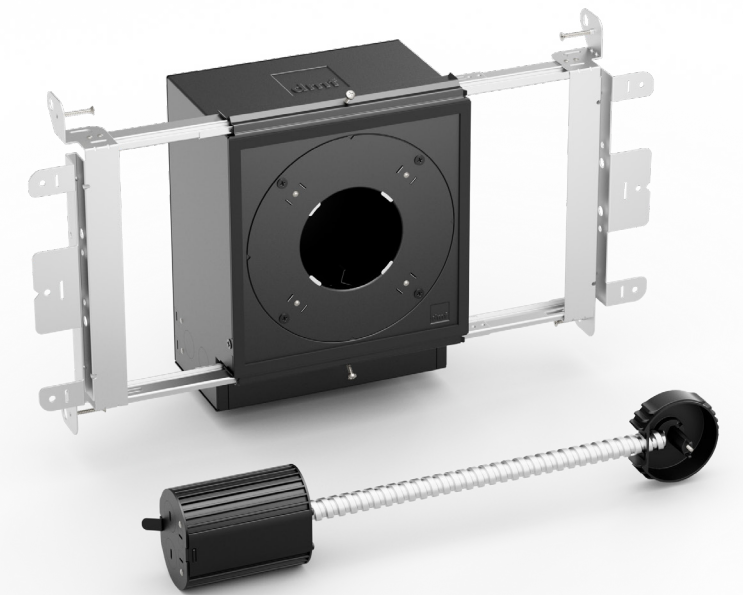
The revolutionary iX Series Modules go smaller without compromise, combining the performance of larger fixtures with the design of small aperture fixtures for a quiet ceiling. They deliver up to 1250 lm with 93+ CRI and are completely interchangeable – swap lumens, color temperature or optics all from below the ceiling.



The future of  
error-free installation

## The key to innovation

The simple universal housing not only accommodates a fixed or adjustable module, it also features a small footprint without sacrificing strong light output. The unique pull-down maintenance latch simplifies serviceability since the splice and driver are both easily accessible below the ceiling. For closed ceiling applications, a Remodel version is also available.



A true breakthrough in the category, our patent-pending Precise Lock Collars eliminate over-cutting and ensure a flawless cutout, and error-free installation at a uniform depth.





# Precision trims in architectural-grade finishes

Deep die-cast aluminum knife edge trim options are meticulously engineered to provide unmatched precision and exceptionally easy installation. Every element of the iX Series is designed to complement or disappear into any space, creating a modern, quiet atmosphere throughout the home.

## Round

Featuring a classic, elegant design that complements any interior, the Round Trim pairs perfectly with every project.

## Flangeless

Use with flangeless wood application or low-profile mud flange. Available for Round, Wall Wash and Adjustable.

## Decorative

Finely crafted acrylic that delivers a subtle, radiant glow. Options include open and hyperbolic.

## Wall Wash

Perfect for delivering broad, consistent light across a wall surface with an unobtrusive design that stays above the ceiling plane.



# Comfort without compromise

DMF's Warm Dim technology transforms how your spaces look and feel without sacrificing simplicity or performance. Warm Dim transitions from a bright and inviting 3000K to a warm and intimate 1800K, maintaining a consistent 93+ CRI and Energy Star rating throughout.







## Integrated driver technology

Our drivers are designed and tested in-house and take dimming down to all new levels. Integrated into the module for ease of installation, our driver provides exceptional control with soft on/off and smooth flicker-free dimming down to 1%. With a multitude of selectable features including brightness, color temperature, light distribution, and specialty lenses, the iX Series modules offer enhanced lighting capabilities without sacrificing stellar efficiency, high performance and an easy-to-install modular design.

# The DMF Promise

The all-new iX Series Small Aperture Downlights were designed for and are only available through custom integrators. We believe these products provide the best solution for your lighting projects and are so confident that we are pledging The DMF Promise – Guaranteed Reliability, Guaranteed Compatibility, and Guaranteed Support.

DMF Lighting is one of the first companies to advocate for custom integrators to adopt light fixtures as part of their business model and is a recognized leader in the industry. The DMF Promise is a natural extension of our commitment to you.



## 10-Year Guarantee

We are proud to provide outstanding products and solutions that are tested with the most rigorous engineering protocols. That's why we're extending our warranty to an industry-best 10 years. This warranty supports our commitment to delivering downlights with superior quality, performance, and dependability.



## Dimming Compatibility

Our integrated driver was designed in-house to ensure compatibility with every popular control system specified by our customers. We guarantee our products to be seamlessly compatible with every major lighting control system, local and centralized.



## Direct Tech Support

In addition to our existing customer service number for general inquiries, you can now directly contact a DMF engineer for technical questions. Not a customer service rep or an outsourced technical support center. You can connect with one of our in-house engineers in our Los Angeles office.



# Brilliance, engineered

DMF designs and builds industry-leading modular downlighting that sets the bar for flexibility, performance, and quality. Our in-house R&D lab is filled with brilliant engineers always at work improving our products and inventing new ones. They understand that light is more than illumination; light is what makes a space beautiful, useful, and ultimately, enjoyable.

Every DMF product delivers exceptional performance and aesthetics, while also saving you time and money year after year. That same ethos drives every part of our company, from our tireless customer service to our fast, intelligent distribution. If you want lighting that's not just built better, but built smarter, DMF is the partner for you.



DMF Lighting  
1118 East 223rd Street, Carson, CA 90745  
323.934.7779 | [info@dmflighting.com](mailto:info@dmflighting.com)  
[dmflighting.com](http://dmflighting.com)